



# SZABO SCANDIC

Part of Europa Biosite

## Produktinformation



Forschungsprodukte & Biochemikalien



Zellkultur & Verbrauchsmaterial



Diagnostik & molekulare Diagnostik



Laborgeräte & Service

Weitere Information auf den folgenden Seiten!  
See the following pages for more information!



### Lieferung & Zahlungsart

siehe unsere [Liefer- und Versandbedingungen](#)

### Zuschläge

- Mindermengenzuschlag
- Trockeneiszuschlag
- Gefahrgutzuschlag
- Expressversand

### SZABO-SCANDIC HandelsgmbH

Quellenstraße 110, A-1100 Wien

T. +43(0)1 489 3961-0

F. +43(0)1 489 3961-7

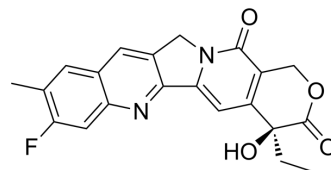
[mail@szabo-scandic.com](mailto:mail@szabo-scandic.com)

[www.szabo-scandic.com](http://www.szabo-scandic.com)

[linkedin.com/company/szaboscandic](https://www.linkedin.com/company/szaboscandic) 

## Decyclohexanamine-Exatecan

<b>Cat. No.:</b>	HY-153185		
<b>CAS No.:</b>	2505045-51-0		
<b>Molecular Formula:</b>	C <sub>21</sub> H <sub>17</sub> FN <sub>2</sub> O <sub>4</sub>		
<b>Molecular Weight:</b>	380.37		
<b>Target:</b>	ADC Cytotoxin; Topoisomerase		
<b>Pathway:</b>	Antibody-drug Conjugate/ADC Related; Cell Cycle/DNA Damage		
<b>Storage:</b>	Powder	-20°C	3 years
		4°C	2 years
	In solvent	-80°C	6 months
		-20°C	1 month



### SOLVENT & SOLUBILITY

#### In Vitro

DMSO : ≥ 32 mg/mL (84.13 mM)  
 \* "≥" means soluble, but saturation unknown.

Concentration	Mass		
	1 mg	5 mg	10 mg
1 mM	2.6290 mL	13.1451 mL	26.2902 mL
5 mM	0.5258 mL	2.6290 mL	5.2580 mL
10 mM	0.2629 mL	1.3145 mL	2.6290 mL

Please refer to the solubility information to select the appropriate solvent.

### BIOLOGICAL ACTIVITY

#### Description

Decyclohexanamine-Exatecan is a Camptothecin derivative, compound a, extracted from patent WO2020219287 A1.

#### IC<sub>50</sub> & Target

Camptothecins

### REFERENCES

[1]. Ravi Chari, et al. Camptothecin derivatives. Patent WO2020219287 A1.

---

**Caution: Product has not been fully validated for medical applications. For research use only.**

Tel: 609-228-6898

Fax: 609-228-5909

E-mail: [tech@MedChemExpress.com](mailto:tech@MedChemExpress.com)

Address: 1 Deer Park Dr, Suite Q, Monmouth Junction, NJ 08852, USA