



SZABO SCANDIC

Part of Europa Biosite

Produktinformation



Forschungsprodukte & Biochemikalien



Zellkultur & Verbrauchsmaterial



Diagnostik & molekulare Diagnostik



Laborgeräte & Service

Weitere Information auf den folgenden Seiten!
See the following pages for more information!



Lieferung & Zahlungsart

siehe unsere [Liefer- und Versandbedingungen](#)

Zuschläge

- Mindermengenzuschlag
- Trockeneiszuschlag
- Gefahrgutzuschlag
- Expressversand

SZABO-SCANDIC HandelsgmbH

Quellenstraße 110, A-1100 Wien

T. +43(0)1 489 3961-0

F. +43(0)1 489 3961-7

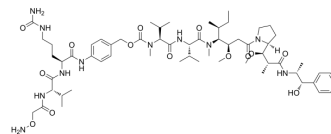
mail@szabo-scandic.com

www.szabo-scandic.com

[linkedin.com/company/szaboscandic](https://www.linkedin.com/company/szaboscandic) 

(Aminoxy)acetamide-Val-Cit-PAB-MMAE

Cat. No.:	HY-153263
CAS No.:	2446645-88-9
Molecular Formula:	C ₆₀ H ₉₇ N ₁₁ O ₁₄
Molecular Weight:	1196.48
Target:	Drug-Linker Conjugates for ADC
Pathway:	Antibody-drug Conjugate/ADC Related
Storage:	-20°C, sealed storage, away from moisture and light * In solvent : -80°C, 6 months; -20°C, 1 month (sealed storage, away from moisture and light)



SOLVENT & SOLUBILITY

In Vitro	DMSO : 100 mg/mL (83.58 mM; Need ultrasonic)					
	Preparing Stock Solutions	Solvent	Mass	1 mg	5 mg	10 mg
		Concentration				
		1 mM		0.8358 mL	4.1789 mL	8.3578 mL
		5 mM		0.1672 mL	0.8358 mL	1.6716 mL
	10 mM		0.0836 mL	0.4179 mL	0.8358 mL	
Please refer to the solubility information to select the appropriate solvent.						
In Vivo	<ol style="list-style-type: none"> Add each solvent one by one: 10% DMSO >> 40% PEG300 >> 5% Tween-80 >> 45% saline Solubility: ≥ 2.5 mg/mL (2.09 mM); Clear solution Add each solvent one by one: 10% DMSO >> 90% (20% SBE-β-CD in saline) Solubility: ≥ 2.5 mg/mL (2.09 mM); Clear solution Add each solvent one by one: 10% DMSO >> 90% corn oil Solubility: ≥ 2.5 mg/mL (2.09 mM); Clear solution 					

BIOLOGICAL ACTIVITY

Description	(Aminoxy)acetamide-Val-Cit-PAB-MMAE (MMAE 5) is an intermediate used in the synthetic preparation of drug-linker conjugates for ADC. (Aminoxy)acetamide-Val-Cit-PAB-MMAE is conjugated to polyamide via oxime bond formation to form MMAE polyamide conjugate. Then MMAE polyamide conjugate can be conjugated to Trastuzumab, to make ADC ^[1] .
--------------------	---

REFERENCES

Caution: Product has not been fully validated for medical applications. For research use only.

Tel: 609-228-6898

Fax: 609-228-5909

E-mail: tech@MedChemExpress.com

Address: 1 Deer Park Dr, Suite Q, Monmouth Junction, NJ 08852, USA