



SZABO SCANDIC

Part of Europa Biosite

Produktinformation



Forschungsprodukte & Biochemikalien



Zellkultur & Verbrauchsmaterial



Diagnostik & molekulare Diagnostik



Laborgeräte & Service

Weitere Information auf den folgenden Seiten!
See the following pages for more information!



Lieferung & Zahlungsart

siehe unsere [Liefer- und Versandbedingungen](#)

Zuschläge

- Mindermengenzuschlag
- Trockeneiszuschlag
- Gefahrgutzuschlag
- Expressversand

SZABO-SCANDIC HandelsgmbH

Quellenstraße 110, A-1100 Wien

T. +43(0)1 489 3961-0

F. +43(0)1 489 3961-7

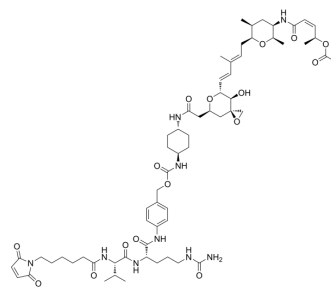
mail@szabo-scandic.com

www.szabo-scandic.com

[linkedin.com/company/szaboscandic](https://www.linkedin.com/company/szaboscandic) 

MC-VC-PAB-Cyclohexanediamine-Thailanstatin A

Cat. No.: HY-153601
CAS No.: 1609108-96-4
Molecular Formula: C₆₃H₉₁N₉O₁₆
Molecular Weight: 1230.45
Target: Drug-Linker Conjugates for ADC; DNA/RNA Synthesis
Pathway: Antibody-drug Conjugate/ADC Related; Cell Cycle/DNA Damage
Storage: -80°C, protect from light, stored under nitrogen



SOLVENT & SOLUBILITY

In Vitro

DMSO : 85 mg/mL (69.08 mM; Need ultrasonic)

Preparing Stock Solutions	Solvent		Mass		
	Concentration		1 mg	5 mg	10 mg
	1 mM		0.8127 mL	4.0636 mL	8.1271 mL
	5 mM		0.1625 mL	0.8127 mL	1.6254 mL
	10 mM		0.0813 mL	0.4064 mL	0.8127 mL

Please refer to the solubility information to select the appropriate solvent.

BIOLOGICAL ACTIVITY

Description

MC-VC-PAB-Cyclohexanediamine-Thailanstatin A is a Spliceostatin (HY-16466) analog, and a drug-linker conjugates for ADC, consisting of ADC Cytotoxin Thailanstatin A (HY-129589) and cleavable ADC linker (MC-vc-PAB). MC-VC-PAB-Cyclohexanediamine-Thailanstatin A can be used for ADC synthesis^[1].

REFERENCES

[1]. Dirico KJ, et al. Preparation of spliceostatin analog antibody conjugates for cancer treatment. World Intellectual Property Organization, WO2014068443 A1. 2014-05-08.

Caution: Product has not been fully validated for medical applications. For research use only.

Tel: 609-228-6898

Fax: 609-228-5909

E-mail: tech@MedChemExpress.com

Address: 1 Deer Park Dr, Suite Q, Monmouth Junction, NJ 08852, USA