



# SZABO SCANDIC

Part of Europa Biosite

## Produktinformation



Forschungsprodukte & Biochemikalien



Zellkultur & Verbrauchsmaterial



Diagnostik & molekulare Diagnostik



Laborgeräte & Service

Weitere Information auf den folgenden Seiten!  
See the following pages for more information!



### Lieferung & Zahlungsart

siehe unsere [Liefer- und Versandbedingungen](#)

### Zuschläge

- Mindermengenzuschlag
- Trockeneiszuschlag
- Gefahrgutzuschlag
- Expressversand

### SZABO-SCANDIC HandelsgmbH

Quellenstraße 110, A-1100 Wien

T. +43(0)1 489 3961-0

F. +43(0)1 489 3961-7

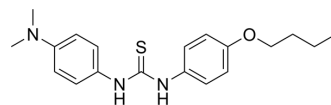
[mail@szabo-scandic.com](mailto:mail@szabo-scandic.com)

[www.szabo-scandic.com](http://www.szabo-scandic.com)

[linkedin.com/company/szaboscandic](https://www.linkedin.com/company/szaboscandic) 

## Thiambutosine

Cat. No.:	HY-15390
CAS No.:	500-89-0
Molecular Formula:	C <sub>19</sub> H <sub>25</sub> N <sub>3</sub> OS
Molecular Weight:	343.49
Target:	Bacterial
Pathway:	Anti-infection
Storage:	4°C, protect from light * In solvent : -80°C, 6 months; -20°C, 1 month (protect from light)



### SOLVENT & SOLUBILITY

#### In Vitro

DMSO : 125 mg/mL (363.91 mM; Need ultrasonic)

Preparing Stock Solutions	Solvent		1 mg	5 mg	10 mg
	Concentration	Mass			
	1 mM		2.9113 mL	14.5565 mL	29.1129 mL
	5 mM		0.5823 mL	2.9113 mL	5.8226 mL
	10 mM		0.2911 mL	1.4556 mL	2.9113 mL

Please refer to the solubility information to select the appropriate solvent.

### BIOLOGICAL ACTIVITY

#### Description

Thiambutosine is an inhibitor of *Mycobacterium leprae* with low oral activity. In animal experiments, Thiambutosine can inhibit leprosy infection by intramuscular injection<sup>[1][2]</sup>.

### REFERENCES

[1]. Ellard G A. A Preliminary Study of the Absorption, et al. A Preliminary Study of the Absorption, Metabolism and Excretion of Injectable Thiambutosine[J]. Leprosy Review, 1966, 37(1): 17-22.

[2]. Adams A R, et al. Dapsone-resistant lepromatous leprosy in England[J]. British medical journal, 1966, 2(5518): 872.

**Caution: Product has not been fully validated for medical applications. For research use only.**

Tel: 609-228-6898

Fax: 609-228-5909

E-mail: tech@MedChemExpress.com

Address: 1 Deer Park Dr, Suite Q, Monmouth Junction, NJ 08852, USA