



SZABO SCANDIC

Part of Europa Biosite

Produktinformation



Forschungsprodukte & Biochemikalien



Zellkultur & Verbrauchsmaterial



Diagnostik & molekulare Diagnostik



Laborgeräte & Service

Weitere Information auf den folgenden Seiten!
See the following pages for more information!



Lieferung & Zahlungsart

siehe unsere [Liefer- und Versandbedingungen](#)

Zuschläge

- Mindermengenzuschlag
- Trockeneiszuschlag
- Gefahrgutzuschlag
- Expressversand

SZABO-SCANDIC HandelsgmbH

Quellenstraße 110, A-1100 Wien

T. +43(0)1 489 3961-0

F. +43(0)1 489 3961-7

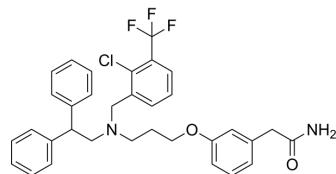
mail@szabo-scandic.com

www.szabo-scandic.com

[linkedin.com/company/szaboscandic](https://www.linkedin.com/company/szaboscandic) 

GW6340

Cat. No.:	HY-154928
CAS No.:	405910-78-3
Molecular Formula:	C ₃₃ H ₃₂ ClF ₃ N ₂ O ₂
Molecular Weight:	581.07
Target:	LXR
Pathway:	Metabolic Enzyme/Protease; Vitamin D Related/Nuclear Receptor
Storage:	-20°C, protect from light * In solvent : -80°C, 6 months; -20°C, 1 month (protect from light)



SOLVENT & SOLUBILITY

In Vitro	DMSO : 100 mg/mL (172.10 mM; Need ultrasonic)					
	Preparing Stock Solutions	Solvent Concentration	Mass	1 mg	5 mg	10 mg
			1 mM	1.7210 mL	8.6048 mL	17.2096 mL
			5 mM	0.3442 mL	1.7210 mL	3.4419 mL
			10 mM	0.1721 mL	0.8605 mL	1.7210 mL
Please refer to the solubility information to select the appropriate solvent.						
In Vivo	1. Add each solvent one by one: 10% DMSO >> 40% PEG300 >> 5% Tween-80 >> 45% saline Solubility: 2.5 mg/mL (4.30 mM); Clear solution; Need ultrasonic					
	2. Add each solvent one by one: 10% DMSO >> 90% corn oil Solubility: 2.5 mg/mL (4.30 mM); Clear solution; Need ultrasonic					

BIOLOGICAL ACTIVITY

Description	GW6340 is an intestinal-specific LXR agonist. GW6340 promotes macrophage reverse cholesterol transport (mRCT) ^[1] .
-------------	--

REFERENCES

[1]. Yasuda T, et al. Tissue-specific liver X receptor activation promotes macrophage reverse cholesterol transport in vivo. *Arterioscler Thromb Vasc Biol.* 2010 Apr;30(4):781-6.

Caution: Product has not been fully validated for medical applications. For research use only.

Tel: 609-228-6898

Fax: 609-228-5909

E-mail: tech@MedChemExpress.com

Address: 1 Deer Park Dr, Suite Q, Monmouth Junction, NJ 08852, USA