



SZABO SCANDIC

Part of Europa Biosite

Produktinformation



Forschungsprodukte & Biochemikalien



Zellkultur & Verbrauchsmaterial



Diagnostik & molekulare Diagnostik



Laborgeräte & Service

Weitere Information auf den folgenden Seiten!
See the following pages for more information!



Lieferung & Zahlungsart

siehe unsere [Liefer- und Versandbedingungen](#)

Zuschläge

- Mindermengenzuschlag
- Trockeneiszuschlag
- Gefahrgutzuschlag
- Expressversand

SZABO-SCANDIC HandelsgmbH

Quellenstraße 110, A-1100 Wien

T. +43(0)1 489 3961-0

F. +43(0)1 489 3961-7

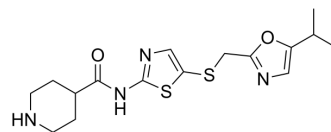
mail@szabo-scandic.com

www.szabo-scandic.com

[linkedin.com/company/szaboscandic](https://www.linkedin.com/company/szaboscandic) 

CAF-382

Cat. No.:	HY-155805
Molecular Formula:	C ₁₆ H ₂₂ N ₄ O ₂ S ₂
Molecular Weight:	366.5
Target:	CDK
Pathway:	Cell Cycle/DNA Damage
Storage:	4°C, protect from light * In solvent : -80°C, 6 months; -20°C, 1 month (protect from light)



BIOLOGICAL ACTIVITY

Description	CAF-382 (compound B1) is an analog of SNS-032 and a CDKL5 and pan-CDK inhibitor with a weak GSK3 α/β affinity (>1.8 μ M) and inhibitory activity. CAF-382 inhibits CDKL5 and blocks the phosphorylation of the CDKL5 E2 domain ^[1] .
IC ₅₀ & Target	IC ₅₀ : \leq 100 nM (CDK9, PCTK1/CDK16, PCTK2/CDK17, PCTK3/CDK18), 2.1-2.7 μ M (CDKL3, CDKL4) ^[1]
In Vitro	CAF-382 (compound B1) (5 nM-5 μ M) causes a significant reduction in pSer222 EB2 at 5 nM without a change in total EB2 levels ^[1] . MCE has not independently confirmed the accuracy of these methods. They are for reference only.

REFERENCES

[1]. Castano A, et al. Discovery and characterization of a specific inhibitor of serine-threonine kinase cyclin-dependent kinase-like 5 (CDKL5) demonstrates role in hippocampal CA1 physiology. *Elife*. 2023 Jul 25;12:e88206.

Caution: Product has not been fully validated for medical applications. For research use only.

Tel: 609-228-6898

Fax: 609-228-5909

E-mail: tech@MedChemExpress.com

Address: 1 Deer Park Dr, Suite Q, Monmouth Junction, NJ 08852, USA