



# SZABO SCANDIC

Part of Europa Biosite

## Produktinformation



Forschungsprodukte & Biochemikalien



Zellkultur & Verbrauchsmaterial



Diagnostik & molekulare Diagnostik



Laborgeräte & Service

Weitere Information auf den folgenden Seiten!  
See the following pages for more information!



### Lieferung & Zahlungsart

siehe unsere [Liefer- und Versandbedingungen](#)

### Zuschläge

- Mindermengenzuschlag
- Trockeneiszuschlag
- Gefahrgutzuschlag
- Expressversand

### SZABO-SCANDIC HandelsgmbH

Quellenstraße 110, A-1100 Wien

T. +43(0)1 489 3961-0

F. +43(0)1 489 3961-7

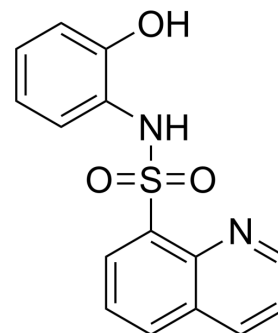
[mail@szabo-scandic.com](mailto:mail@szabo-scandic.com)

[www.szabo-scandic.com](http://www.szabo-scandic.com)

[linkedin.com/company/szaboscandic](https://www.linkedin.com/company/szaboscandic) 

## ChEs/MAOs-IN-2

|                           |   |
|---------------------------|---|
| <b>Cat. No.:</b>          | HY-158092   |
| <b>CAS No.:</b>           | 693268-77-8   |
| <b>Molecular Formula:</b> | C <sub>15</sub> H <sub>12</sub> N <sub>2</sub> O <sub>3</sub> S                           |
| <b>Molecular Weight:</b>  | 300.33  |
| <b>Target:</b>            | Cholinesterase (ChE); Monoamine Oxidase   |
| <b>Pathway:</b>           | Neuronal Signaling  |
| <b>Storage:</b>           | Please store the product under the recommended conditions in the Certificate of Analysis. |



### BIOLOGICAL ACTIVITY

|                                     |  |                                      |                                     |                                     |
|-------------------------------------|--|--------------------------------------|-------------------------------------|-------------------------------------|
| <b>Description</b>                  | ChEs/MAOs-IN-2 (compound a11) is a cholinesterases and monoamine oxidases inhibitor with IC <sub>50</sub> value of 0.10, 0.20, 0.30, 0.40 μM for MAO-A, MAO-B, AChE, and BChE, respectively. ChEs/MAOs-IN-2 has the potential for the research of Alzheimer's disease <sup>[1]</sup> . |                                      |                                     |                                     |
| <b>IC<sub>50</sub> &amp; Target</b> | MAO-A<br>0.10 μM (IC <sub>50</sub> )   | MAO-B<br>0.20 μM (IC <sub>50</sub> ) | AChE<br>0.30 μM (IC <sub>50</sub> ) | BChE<br>0.40 μM (IC <sub>50</sub> ) |

### REFERENCES

[1]. Jalil S, et al. Quinoline-sulfonamides as a multi-targeting neurotherapeutic for cognitive decline: in vitro, in silico studies and ADME evaluation of monoamine oxidases and cholinesterases inhibitors. RSC Adv. 2024 Mar 15;14(13):8905-8920.

**Caution: Product has not been fully validated for medical applications. For research use only.**

Tel: 609-228-6898

Fax: 609-228-5909

E-mail: tech@MedChemExpress.com

Address: 1 Deer Park Dr, Suite Q, Monmouth Junction, NJ 08852, USA