



# SZABO SCANDIC

Part of Europa Biosite

## Produktinformation



Forschungsprodukte & Biochemikalien



Zellkultur & Verbrauchsmaterial



Diagnostik & molekulare Diagnostik



Laborgeräte & Service

Weitere Information auf den folgenden Seiten!  
See the following pages for more information!



### Lieferung & Zahlungsart

siehe unsere [Liefer- und Versandbedingungen](#)

### Zuschläge

- Mindermengenzuschlag
- Trockeneiszuschlag
- Gefahrgutzuschlag
- Expressversand

### SZABO-SCANDIC HandelsgmbH

Quellenstraße 110, A-1100 Wien

T. +43(0)1 489 3961-0

F. +43(0)1 489 3961-7

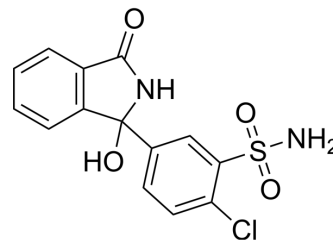
[mail@szabo-scandic.com](mailto:mail@szabo-scandic.com)

[www.szabo-scandic.com](http://www.szabo-scandic.com)

[linkedin.com/company/szaboscandic](https://www.linkedin.com/company/szaboscandic) 

## Chlorthalidone (Standard)

Cat. No.:	HY-15833R
CAS No.:	77-36-1
Molecular Formula:	C <sub>14</sub> H <sub>11</sub> ClN <sub>2</sub> O <sub>4</sub> S
Molecular Weight:	338.77
Target:	Others
Pathway:	Others
Storage:	Please store the product under the recommended conditions in the Certificate of Analysis.



### BIOLOGICAL ACTIVITY

#### Description

Chlorthalidone (Standard) is the analytical standard of Chlorthalidone. This product is intended for research and analytical applications. Chlorthalidone is a thiazide-like diuretic used to treat hypertension.

### REFERENCES

- [1]. Barrios V, et al. Which thiazide to choose as add-on therapy for hypertension? *Integr Blood Press Control*. 2014 Jul 30;7:35-47.
- [2]. Ettinger B, et al. Chlorthalidone reduces calcium oxalate calculous recurrence but magnesium hydroxide does not. *J Urol*. 1988 Apr;139(4):679-84.

**Caution: Product has not been fully validated for medical applications. For research use only.**

Tel: 609-228-6898

Fax: 609-228-5909

E-mail: tech@MedChemExpress.com

Address: 1 Deer Park Dr, Suite Q, Monmouth Junction, NJ 08852, USA