



SZABO SCANDIC

Part of Europa Biosite

Produktinformation



Forschungsprodukte & Biochemikalien



Zellkultur & Verbrauchsmaterial



Diagnostik & molekulare Diagnostik



Laborgeräte & Service

Weitere Information auf den folgenden Seiten!
See the following pages for more information!



Lieferung & Zahlungsart

siehe unsere [Liefer- und Versandbedingungen](#)

Zuschläge

- Mindermengenzuschlag
- Trockeneiszuschlag
- Gefahrgutzuschlag
- Expressversand

SZABO-SCANDIC HandelsgmbH

Quellenstraße 110, A-1100 Wien

T. +43(0)1 489 3961-0

F. +43(0)1 489 3961-7

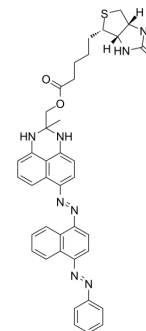
mail@szabo-scandic.com

www.szabo-scandic.com

[linkedin.com/company/szaboscandic](https://www.linkedin.com/company/szaboscandic) 

SBB-Analogue (GL13) Biotin

Cat. No.:	HY-158742
CAS No.:	2171036-89-6
Molecular Formula:	C ₃₉ H ₃₈ N ₈ O ₃ S
Molecular Weight:	698.84
Target:	Fluorescent Dye
Pathway:	Others
Storage:	Please store the product under the recommended conditions in the Certificate of Analysis.



BIOLOGICAL ACTIVITY

Description

SBB-Analogue (GL13) Biotin (GL13; SBB-A-B) is composed of a Sudan Black B (SBB; HY-D0213) derivative conjugated to biotin. SBB-Analogue (GL13) Biotin detects robustly senescent cells. SBB-Analogue (GL13) Biotin is deprived of the false positive staining disadvantages of SA-β-gal due to serum starvation and cell confluency. SBB-Analogue (GL13) Biotin can be used in flow cytometry and immunofluorescence analysis, etc^{[1][2]}.

REFERENCES

[1]. Konstantinos Evangelou, et al. Robust, universal biomarker assay to detect senescent cells in biological specimens. *Aging Cell*. 2017 Feb;16(1):192-197.

[2]. Fan Zhang, et al. Methods to Study Myc-Regulated Cellular Senescence: An Update. *Methods Mol Biol*. 2021;2318:241-254.

Caution: Product has not been fully validated for medical applications. For research use only.

Tel: 609-228-6898

Fax: 609-228-5909

E-mail: tech@MedChemExpress.com

Address: 1 Deer Park Dr, Suite Q, Monmouth Junction, NJ 08852, USA