



SZABO SCANDIC

Part of Europa Biosite

Produktinformation



Forschungsprodukte & Biochemikalien



Zellkultur & Verbrauchsmaterial



Diagnostik & molekulare Diagnostik



Laborgeräte & Service

Weitere Information auf den folgenden Seiten!
See the following pages for more information!



Lieferung & Zahlungsart

siehe unsere [Liefer- und Versandbedingungen](#)

Zuschläge

- Mindermengenzuschlag
- Trockeneiszuschlag
- Gefahrgutzuschlag
- Expressversand

SZABO-SCANDIC HandelsgmbH

Quellenstraße 110, A-1100 Wien

T. +43(0)1 489 3961-0

F. +43(0)1 489 3961-7

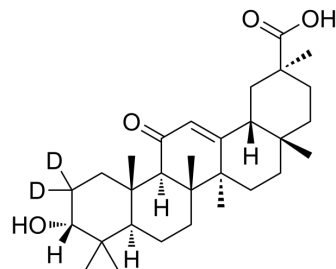
mail@szabo-scandic.com

www.szabo-scandic.com

[linkedin.com/company/szaboscandic](https://www.linkedin.com/company/szaboscandic) 

3-Epiglycyrrhetic acid-d₂

Cat. No.:	HY-158995S		
Molecular Formula:	C ₃₀ H ₄₄ D ₂ O ₄		
Molecular Weight:	472.7		
Target:	Isotope-Labeled Compounds		
Pathway:	Others		
Storage:	Powder	-20°C	3 years
		4°C	2 years
	In solvent	-80°C	6 months
		-20°C	1 month



SOLVENT & SOLUBILITY

In Vitro

DMSO : 100 mg/mL (211.55 mM; Need ultrasonic)

Concentration	Mass		
	1 mg	5 mg	10 mg
1 mM	2.1155 mL	10.5775 mL	21.1551 mL
5 mM	0.4231 mL	2.1155 mL	4.2310 mL
10 mM	0.2116 mL	1.0578 mL	2.1155 mL

Please refer to the solubility information to select the appropriate solvent.

BIOLOGICAL ACTIVITY

Description

3-Epiglycyrrhetic acid-d₂ (3 α -Glycyrrhetic acid-d₂) is the deuterium-labeled 3-Epiglycyrrhetic acid. 3-Epiglycyrrhetic acid is a derivative of glycyrrhetic acid. Glycyrrhetic acid and its derivative are considered to have anti-inflammatory, anti-ulcer, and antiviral activities^{[1][2]}.

REFERENCES

[1]. Russak EM, et al. Impact of Deuterium Substitution on the Pharmacokinetics of Pharmaceuticals. *Ann Pharmacother*. 2019 Feb;53(2):211-216.

[2]. Isbrucker RA, et al., Risk and safety assessment on the consumption of Licorice root (*Glycyrrhiza* sp.), its extract and powder as a food ingredient, with emphasis on the pharmacology and toxicology of glycyrrhizin. *Regul Toxicol Pharmacol*. 2006 Dec;46(3):167-92.

Caution: Product has not been fully validated for medical applications. For research use only.

Tel: 609-228-6898

Fax: 609-228-5909

E-mail: tech@MedChemExpress.com

Address: 1 Deer Park Dr, Suite Q, Monmouth Junction, NJ 08852, USA