



SZABO SCANDIC

Part of Europa Biosite

Produktinformation



Forschungsprodukte & Biochemikalien



Zellkultur & Verbrauchsmaterial



Diagnostik & molekulare Diagnostik



Laborgeräte & Service

Weitere Information auf den folgenden Seiten!
See the following pages for more information!



Lieferung & Zahlungsart

siehe unsere [Liefer- und Versandbedingungen](#)

Zuschläge

- Mindermengenzuschlag
- Trockeneiszuschlag
- Gefahrgutzuschlag
- Expressversand

SZABO-SCANDIC HandelsgmbH

Quellenstraße 110, A-1100 Wien

T. +43(0)1 489 3961-0

F. +43(0)1 489 3961-7

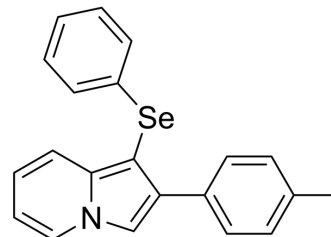
mail@szabo-scandic.com

www.szabo-scandic.com

[linkedin.com/company/szaboscandic](https://www.linkedin.com/company/szaboscandic) 

MeSel

Cat. No.:	HY-159106
CAS No.:	2901664-87-5
Molecular Formula:	C ₂₁ H ₁₇ NSe
Molecular Weight:	362.33
Target:	Dopamine Receptor; Androgen Receptor; Monoamine Oxidase
Pathway:	GPCR/G Protein; Neuronal Signaling; Vitamin D Related/Nuclear Receptor
Storage:	Please store the product under the recommended conditions in the Certificate of Analysis.



BIOLOGICAL ACTIVITY

Description

MeSel exhibits a weak inhibitory activity against monoamine oxidase MAO-A and MAO-B (IC₅₀=198.8 μM). MeSel regulates dopamine receptor D2 and norepinephrine receptor α₂, β₁, and exhibits antidepressant-like effect in mice. MeSel is orally active^[1].

REFERENCES

[1]. da Rocha MJ, et al., 1-(Phenylselanyl)-2-(p-tolyl)indolizine: A selenoindolizine with potential antidepressant-like activity in mice mediated by the modulation of dopaminergic and noradrenergic systems. *Brain Res.* 2024 Jul 1;1834:148904.

Caution: Product has not been fully validated for medical applications. For research use only.

Tel: 609-228-6898

Fax: 609-228-5909

E-mail: tech@MedChemExpress.com

Address: 1 Deer Park Dr, Suite Q, Monmouth Junction, NJ 08852, USA