



SZABO SCANDIC

Part of Europa Biosite

Produktinformation



Forschungsprodukte & Biochemikalien



Zellkultur & Verbrauchsmaterial



Diagnostik & molekulare Diagnostik



Laborgeräte & Service

Weitere Information auf den folgenden Seiten!
See the following pages for more information!



Lieferung & Zahlungsart

siehe unsere [Liefer- und Versandbedingungen](#)

Zuschläge

- Mindermengenzuschlag
- Trockeneiszuschlag
- Gefahrgutzuschlag
- Expressversand

SZABO-SCANDIC HandelsgmbH

Quellenstraße 110, A-1100 Wien

T. +43(0)1 489 3961-0

F. +43(0)1 489 3961-7

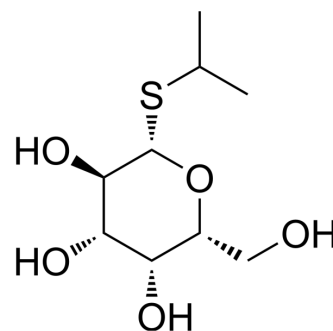
mail@szabo-scandic.com

www.szabo-scandic.com

[linkedin.com/company/szaboscandic](https://www.linkedin.com/company/szaboscandic) 

IPTG

Cat. No.:	HY-15921		
CAS No.:	367-93-1		
Molecular Formula:	C ₉ H ₁₈ O ₅ S		
Molecular Weight:	238.3		
Target:	Biochemical Assay Reagents		
Pathway:	Others		
Storage:	Powder	-20°C	3 years
		4°C	2 years
	In solvent	-80°C	6 months
		-20°C	1 month



SOLVENT & SOLUBILITY

In Vitro

H₂O : 100 mg/mL (419.64 mM; Need ultrasonic)
 DMSO : ≥ 60 mg/mL (251.78 mM)
 * "≥" means soluble, but saturation unknown.

Preparing Stock Solutions	Solvent		Mass		
	Concentration		1 mg	5 mg	10 mg
	1 mM		4.1964 mL	20.9820 mL	41.9639 mL
	5 mM		0.8393 mL	4.1964 mL	8.3928 mL
	10 mM		0.4196 mL	2.0982 mL	4.1964 mL

Please refer to the solubility information to select the appropriate solvent.

In Vivo

- Add each solvent one by one: PBS
Solubility: 100 mg/mL (419.64 mM); Clear solution; Need ultrasonic
- Add each solvent one by one: 10% DMSO >> 40% PEG300 >> 5% Tween-80 >> 45% saline
Solubility: ≥ 2.08 mg/mL (8.73 mM); Clear solution
- Add each solvent one by one: 10% DMSO >> 90% (20% SBE-β-CD in saline)
Solubility: ≥ 2.08 mg/mL (8.73 mM); Clear solution
- Add each solvent one by one: 10% DMSO >> 90% corn oil
Solubility: ≥ 2.08 mg/mL (8.73 mM); Clear solution

BIOLOGICAL ACTIVITY

Description

IPTG is a molecular mimic of allolactose, a lactose metabolite that triggers transcription of the lac operon, and it is therefore used to induce protein expression where the gene is under the control of the lac operator.

In Vitro

IPTG uptake by *E. coli* can be independent of the action of lactose permease, since other transport pathways are also involved. At low concentration, IPTG enters cells through lactose permease, but at high concentrations (typically used for protein induction), IPTG can enter the cells independently of lactose permease^[1].
MCE has not independently confirmed the accuracy of these methods. They are for reference only.

CUSTOMER VALIDATION

- Acta Pharm Sin B. 2022.
- Sci Adv. 2023 Feb 17;9(7):eade4770.
- Oncogene. 2023 Jun 13.
- Int J Mol Sci. 2018 May 7;19(5). pii: E1393.
- AMB Express. 2023 Apr 29;13(1):40.

See more customer validations on www.MedChemExpress.com

REFERENCES

[1]. Isopropyl β -D-1-thiogalactopyranoside

Caution: Product has not been fully validated for medical applications. For research use only.

Tel: 609-228-6898

Fax: 609-228-5909

E-mail: tech@MedChemExpress.com

Address: 1 Deer Park Dr, Suite Q, Monmouth Junction, NJ 08852, USA