



SZABO SCANDIC

Part of Europa Biosite

Produktinformation



Forschungsprodukte & Biochemikalien



Zellkultur & Verbrauchsmaterial



Diagnostik & molekulare Diagnostik



Laborgeräte & Service

Weitere Information auf den folgenden Seiten!
See the following pages for more information!



Lieferung & Zahlungsart

siehe unsere [Liefer- und Versandbedingungen](#)

Zuschläge

- Mindermengenzuschlag
- Trockeneiszuschlag
- Gefahrgutzuschlag
- Expressversand

SZABO-SCANDIC HandelsgmbH

Quellenstraße 110, A-1100 Wien

T. +43(0)1 489 3961-0

F. +43(0)1 489 3961-7

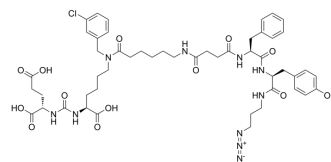
mail@szabo-scandic.com

www.szabo-scandic.com

[linkedin.com/company/szaboscandic](https://www.linkedin.com/company/szaboscandic) 

PSMA-Val-Cit-PAB-Azide

Cat. No.:	HY-160893		
CAS No.:	2374814-84-1		
Molecular Formula:	C ₅₀ H ₆₅ ClN ₁₀ O ₁₃		
Molecular Weight:	1049.56		
Target:	Drug-Linker Conjugates for ADC; PSMA		
Pathway:	Antibody-drug Conjugate/ADC Related; Immunology/Inflammation		
Storage:	Powder	-20°C	3 years
		4°C	2 years
	In solvent	-80°C	6 months
		-20°C	1 month



SOLVENT & SOLUBILITY

In Vitro

DMSO : 200 mg/mL (190.56 mM; Need ultrasonic)

Concentration	Solvent	Mass		
		1 mg	5 mg	10 mg
Preparing Stock Solutions	1 mM	0.9528 mL	4.7639 mL	9.5278 mL
	5 mM	0.1906 mL	0.9528 mL	1.9056 mL
	10 mM	0.0953 mL	0.4764 mL	0.9528 mL

Please refer to the solubility information to select the appropriate solvent.

BIOLOGICAL ACTIVITY

Description

PSMA-Val-Cit-PAB-Azide is a drug-linker conjugate for ADC. PSMA-Val-Cit-PAB-Azide contains the cleavable ADCs linker (Val-Cit-PAB) and a novel small-molecule PSMA-targeted conjugate. It contains an Azide group and can undergo copper-catalyzed azide-alkyne cycloaddition reaction (CuAAC) with molecules containing Alkyne groups^[1].

IC₅₀ & Target

Traditional Cytotoxic Agents

REFERENCES

[1]. Aleksei E Machulkin, et al. Synthesis, Characterization, and Preclinical Evaluation of a Small-Molecule Prostate-Specific Membrane Antigen-Targeted Monomethyl Auristatin E Conjugate. *J Med Chem.* 2021 Dec 9;64(23):17123-17145.

Caution: Product has not been fully validated for medical applications. For research use only.

Tel: 609-228-6898

Fax: 609-228-5909

E-mail: tech@MedChemExpress.com

Address: 1 Deer Park Dr, Suite Q, Monmouth Junction, NJ 08852, USA