



SZABO SCANDIC

Part of Europa Biosite

Produktinformation



Forschungsprodukte & Biochemikalien



Zellkultur & Verbrauchsmaterial



Diagnostik & molekulare Diagnostik



Laborgeräte & Service

Weitere Information auf den folgenden Seiten!
See the following pages for more information!



Lieferung & Zahlungsart

siehe unsere [Liefer- und Versandbedingungen](#)

Zuschläge

- Mindermengenzuschlag
- Trockeneiszuschlag
- Gefahrgutzuschlag
- Expressversand

SZABO-SCANDIC HandelsgmbH

Quellenstraße 110, A-1100 Wien

T. +43(0)1 489 3961-0

F. +43(0)1 489 3961-7

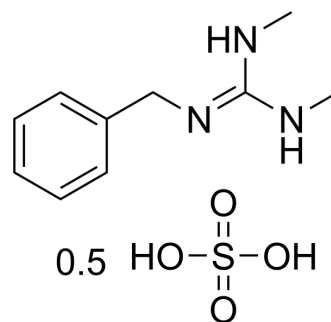
mail@szabo-scandic.com

www.szabo-scandic.com

[linkedin.com/company/szaboscandic](https://www.linkedin.com/company/szaboscandic) 

Bethanidine sulfate

Cat. No.:	HY-16094
CAS No.:	114-85-2
Molecular Formula:	C ₁₀ H ₁₇ N ₃ O ₄ S
Molecular Weight:	275.32
Target:	Adrenergic Receptor
Pathway:	GPCR/G Protein; Neuronal Signaling
Storage:	Please store the product under the recommended conditions in the Certificate of Analysis.



BIOLOGICAL ACTIVITY

Description

Bethanidine sulfate and its ortho-chloro derivative (BW 392C60) are potent adrenergic neurone blockers with sympathomimetic effects similar to bethyrium and guanethidine in various animal models, particularly in cats. They inhibit the release of noradrenaline during nerve stimulation and enhance smooth muscle responses to adrenaline and noradrenaline. Bethanidine sulfate increases pressor responses to tyramine, though this effect diminishes with higher doses. Unlike guanethidine, Bethanidine sulfate does not deplete pressor amine content in the iris of cats post-administration. It also briefly inhibits autonomic cholinergic mechanisms and causes temporary neuromuscular paralysis in large doses, contrasting with its prolonged adrenergic neurone blocking effects^[1].

REFERENCES

[1]. ADRENERGIC NEURONE BLOCKADE AND OTHER ACUTE EFFECTS CAUSED BY N-BENZYL-N,N"-DIMETHYLGUANIDINE* AND ITS ORTHO-CHLORO DERIVATIVE

Caution: Product has not been fully validated for medical applications. For research use only.

Tel: 609-228-6898

Fax: 609-228-5909

E-mail: tech@MedChemExpress.com

Address: 1 Deer Park Dr, Suite Q, Monmouth Junction, NJ 08852, USA