



# SZABO SCANDIC

Part of Europa Biosite

## Produktinformation



Forschungsprodukte & Biochemikalien



Zellkultur & Verbrauchsmaterial



Diagnostik & molekulare Diagnostik



Laborgeräte & Service

Weitere Information auf den folgenden Seiten!  
See the following pages for more information!



### Lieferung & Zahlungsart

siehe unsere [Liefer- und Versandbedingungen](#)

### Zuschläge

- Mindermengenzuschlag
- Trockeneiszuschlag
- Gefahrgutzuschlag
- Expressversand

### SZABO-SCANDIC HandelsgmbH

Quellenstraße 110, A-1100 Wien

T. +43(0)1 489 3961-0

F. +43(0)1 489 3961-7

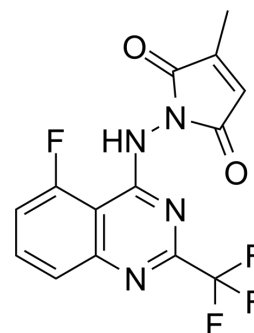
[mail@szabo-scandic.com](mailto:mail@szabo-scandic.com)

[www.szabo-scandic.com](http://www.szabo-scandic.com)

[linkedin.com/company/szaboscandic](https://www.linkedin.com/company/szaboscandic) 

## CW2158

Cat. No.:	HY-161392
Molecular Formula:	C <sub>14</sub> H <sub>8</sub> F <sub>4</sub> N <sub>4</sub> O <sub>2</sub>
Molecular Weight:	340.23
Target:	CRM1
Pathway:	Membrane Transporter/Ion Channel
Storage:	Please store the product under the recommended conditions in the Certificate of Analysis.



### BIOLOGICAL ACTIVITY

<b>Description</b>	CW2158 (Compound 13) is a modulator for exportin1 (XPO1), which disrupts the chromatin binding, inhibits NFAT transcription factors and activation of T cells <sup>[1]</sup> .	
<b>In Vitro</b>	CW2158 (10 nM-10 μM) inhibits the expression of IL-2 (6 h) and viability (24 h) of Jurkat cells <sup>[1]</sup> . MCE has not independently confirmed the accuracy of these methods. They are for reference only. Cell Viability Assay <sup>[1]</sup>	
	Cell Line:	Jurkat
	Concentration:	10 nM-10 μM
	Incubation Time:	24 h
	Result:	Inhibited cell viability of Jurkats.

### REFERENCES

[1]. Chen YF, et al., Targeting the chromatin binding of exportin-1 disrupts NFAT and T cell activation. Nat Chem Biol. 2024 Mar 25.

**Caution: Product has not been fully validated for medical applications. For research use only.**

Tel: 609-228-6898

Fax: 609-228-5909

E-mail: tech@MedChemExpress.com

Address: 1 Deer Park Dr, Suite Q, Monmouth Junction, NJ 08852, USA