



# SZABO SCANDIC

Part of Europa Biosite

## Produktinformation



Forschungsprodukte & Biochemikalien



Zellkultur & Verbrauchsmaterial



Diagnostik & molekulare Diagnostik



Laborgeräte & Service

Weitere Information auf den folgenden Seiten!  
See the following pages for more information!



### Lieferung & Zahlungsart

siehe unsere [Liefer- und Versandbedingungen](#)

### Zuschläge

- Mindermengenzuschlag
- Trockeneiszuschlag
- Gefahrgutzuschlag
- Expressversand

### SZABO-SCANDIC HandelsgmbH

Quellenstraße 110, A-1100 Wien

T. +43(0)1 489 3961-0

F. +43(0)1 489 3961-7

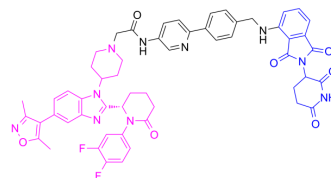
[mail@szabo-scandic.com](mailto:mail@szabo-scandic.com)

[www.szabo-scandic.com](http://www.szabo-scandic.com)

[linkedin.com/company/szaboscandic](https://www.linkedin.com/company/szaboscandic) 

## XYD190

|                           |   |
|---------------------------|---|
| <b>Cat. No.:</b>          | HY-161494   |
| <b>Molecular Formula:</b> | C <sub>55</sub> H <sub>50</sub> F <sub>2</sub> N <sub>10</sub> O <sub>7</sub>             |
| <b>Molecular Weight:</b>  | 1001.05   |
| <b>Target:</b>            | PROTACs; Epigenetic Reader Domain   |
| <b>Pathway:</b>           | PROTAC; Epigenetics   |
| <b>Storage:</b>           | Please store the product under the recommended conditions in the Certificate of Analysis. |



### BIOLOGICAL ACTIVITY

|                    |   |            |                                 |                |        |                  |   |         |                               |            |                                 |                |          |                  |     |         |                                 |
|--------------------|---|------------|---------------------------------|----------------|--------|------------------|---|---------|-------------------------------|------------|---------------------------------|----------------|----------|------------------|-----|---------|---------------------------------|
| <b>Description</b> | XYD190 (Compound 14g) is an orally active degrader for CBP/p300. XYD190 inhibits CBP/p300 bromodomain with IC <sub>50</sub> of 483.7 nM. XYD190 exhibits antitumor activity against acute myeloid leukemia. (Structure: Pink, CBP/p300 ligand 4 (HY-161495); Blue, E3 ligase ligand (HY-14658); Black: linker (HY-161496)) <sup>[1]</sup> .   |            |                                 |                |        |                  |   |         |                               |            |                                 |                |          |                  |     |         |                                 |
| <b>In Vitro</b>    | <p>XYD190 (0-1 μM, 72-120 h) inhibits proliferations of acute myeloid leukemia (AML) cells MV4;11, MOLM-13 and MOLM-16, with the IC<sub>50</sub> of 1.8, 26.9 and 4.6 nM, respectively<sup>[1]</sup>.</p> <p>XYD190 (0-150 nM, 6 h) induces CBP and p300 degradation in bromodomain family proteins in a CRBN- and proteasome-dependent manner<sup>[1]</sup>.</p> <p>MCE has not independently confirmed the accuracy of these methods. They are for reference only.</p> <p>Cell Proliferation Assay<sup>[1]</sup></p> <table border="1"> <tr> <td>Cell Line:</td> <td>MV4;11 AML, MOLM-13 and MOLM-16</td> </tr> <tr> <td>Concentration:</td> <td>0-1 μM</td> </tr> <tr> <td>Incubation Time:</td> <td>3 days for MOLM-13, 4 days for MV4;11 AML and MOLM-16</td> </tr> <tr> <td>Result:</td> <td>Inhibited cell proliferation.</td> </tr> </table> <p>Western Blot Analysis<sup>[1]</sup></p> <table border="1"> <tr> <td>Cell Line:</td> <td>MV4;11 AML, MOLM-13 and MOLM-16</td> </tr> <tr> <td>Concentration:</td> <td>0-150 nM</td> </tr> <tr> <td>Incubation Time:</td> <td>6 h</td> </tr> <tr> <td>Result:</td> <td>Degraded CBP and p300 proteins.</td> </tr> </table> | Cell Line: | MV4;11 AML, MOLM-13 and MOLM-16 | Concentration: | 0-1 μM | Incubation Time: | 3 days for MOLM-13, 4 days for MV4;11 AML and MOLM-16 | Result: | Inhibited cell proliferation. | Cell Line: | MV4;11 AML, MOLM-13 and MOLM-16 | Concentration: | 0-150 nM | Incubation Time: | 6 h | Result: | Degraded CBP and p300 proteins. |
| Cell Line:         | MV4;11 AML, MOLM-13 and MOLM-16   |            |                                 |                |        |                  |   |         |                               |            |                                 |                |          |                  |     |         |                                 |
| Concentration:     | 0-1 μM  |            |                                 |                |        |                  |   |         |                               |            |                                 |                |          |                  |     |         |                                 |
| Incubation Time:   | 3 days for MOLM-13, 4 days for MV4;11 AML and MOLM-16   |            |                                 |                |        |                  |   |         |                               |            |                                 |                |          |                  |     |         |                                 |
| Result:            | Inhibited cell proliferation.   |            |                                 |                |        |                  |   |         |                               |            |                                 |                |          |                  |     |         |                                 |
| Cell Line:         | MV4;11 AML, MOLM-13 and MOLM-16   |            |                                 |                |        |                  |   |         |                               |            |                                 |                |          |                  |     |         |                                 |
| Concentration:     | 0-150 nM  |            |                                 |                |        |                  |   |         |                               |            |                                 |                |          |                  |     |         |                                 |
| Incubation Time:   | 6 h   |            |                                 |                |        |                  |   |         |                               |            |                                 |                |          |                  |     |         |                                 |
| Result:            | Degraded CBP and p300 proteins.   |            |                                 |                |        |                  |   |         |                               |            |                                 |                |          |                  |     |         |                                 |
| <b>In Vivo</b>     | <p>CBP/p300 ligand 4 (5 mg/kg, p.o., every other day for 2 weeks) exhibits antitumor activity in MV4;11 xenograft mice model, with a tumor growth inhibition rate TGI of 88%<sup>[1]</sup>.</p> <p>MCE has not independently confirmed the accuracy of these methods. They are for reference only.</p>  |            |                                 |                |        |                  |   |         |                               |            |                                 |                |          |                  |     |         |                                 |

---

|                 |   |
|-----------------|---|
| Animal Model:   | MV4;11 xenograft NOD-SCID mice model <sup>[1]</sup> |
| Dosage:         | 5 mg/kg   |
| Administration: | p.o., every other day for 2 weeks                   |
| Result:         | Inhibited tumor growth with a TGI of 88%.           |

---

## REFERENCES

---

[1]. Hu J, et al., Discovery of Highly Potent and Efficient CBP/p300 Degraders with Strong In Vivo Antitumor Activity. J Med Chem. 2024 May 9;67(9):6952-6986.

---

**Caution: Product has not been fully validated for medical applications. For research use only.**

Tel: 609-228-6898

Fax: 609-228-5909

E-mail: tech@MedChemExpress.com

Address: 1 Deer Park Dr, Suite Q, Monmouth Junction, NJ 08852, USA