



SZABO SCANDIC

Part of Europa Biosite

Produktinformation



Forschungsprodukte & Biochemikalien



Zellkultur & Verbrauchsmaterial



Diagnostik & molekulare Diagnostik



Laborgeräte & Service

Weitere Information auf den folgenden Seiten!
See the following pages for more information!



Lieferung & Zahlungsart

siehe unsere [Liefer- und Versandbedingungen](#)

Zuschläge

- Mindermengenzuschlag
- Trockeneiszuschlag
- Gefahrgutzuschlag
- Expressversand

SZABO-SCANDIC HandelsgmbH

Quellenstraße 110, A-1100 Wien

T. +43(0)1 489 3961-0

F. +43(0)1 489 3961-7

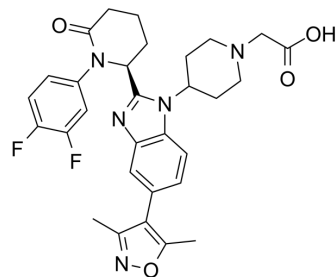
mail@szabo-scandic.com

www.szabo-scandic.com

[linkedin.com/company/szaboscandic](https://www.linkedin.com/company/szaboscandic) 

CBP/p300 ligand 4

Cat. No.:	HY-161495
Molecular Formula:	C ₃₀ H ₃₁ F ₂ N ₅ O ₄
Molecular Weight:	563.6
Target:	Ligands for Target Protein for PROTAC; Epigenetic Reader Domain
Pathway:	PROTAC; Epigenetics
Storage:	Please store the product under the recommended conditions in the Certificate of Analysis.



BIOLOGICAL ACTIVITY

Description	CBP/p300 ligand 4 (Compound 4) is an orally active inhibitor for CBP/p300 bromodomain, with IC ₅₀ of 91.4 nM. CBP/p300 ligand 4 serves as a ligand for target protein XYD190 (HY-161495). XYD190 is a PROTAC degrader for CBP/p300 ^[1] .																
IC₅₀ & Target	IC ₅₀ : 91.4 nM (CBP/p300 bromodomain)																
In Vitro	<p>CBP/p300 ligand 4 (0-1 μM, 72-120 h) inhibits proliferations of AML cells MV4;11, MOLM-13 and MOLM-16, with the IC₅₀ of 20.4, 102 and 12.9 nM, respectively, through degradation of CBP, p300 and c-Myc proteins^[1]. MCE has not independently confirmed the accuracy of these methods. They are for reference only.</p> <p>Cell Viability Assay^[1]</p> <table border="1"> <tr> <td>Cell Line:</td> <td>MV4;11 AML, MOLM-13 and MOLM-16</td> </tr> <tr> <td>Concentration:</td> <td>0-1 μM</td> </tr> <tr> <td>Incubation Time:</td> <td>3 days for MOLM-13, 4 days for MV4;11 AML and MOLM-16</td> </tr> <tr> <td>Result:</td> <td>Inhibited cell proliferation.</td> </tr> </table> <p>Western Blot Analysis^[1]</p> <table border="1"> <tr> <td>Cell Line:</td> <td>MV4;11 AML, MOLM-13 and MOLM-16</td> </tr> <tr> <td>Concentration:</td> <td>50 nM</td> </tr> <tr> <td>Incubation Time:</td> <td>24 h</td> </tr> <tr> <td>Result:</td> <td>Degraded CBP, p300 and c-Myc proteins.</td> </tr> </table>	Cell Line:	MV4;11 AML, MOLM-13 and MOLM-16	Concentration:	0-1 μM	Incubation Time:	3 days for MOLM-13, 4 days for MV4;11 AML and MOLM-16	Result:	Inhibited cell proliferation.	Cell Line:	MV4;11 AML, MOLM-13 and MOLM-16	Concentration:	50 nM	Incubation Time:	24 h	Result:	Degraded CBP, p300 and c-Myc proteins.
Cell Line:	MV4;11 AML, MOLM-13 and MOLM-16																
Concentration:	0-1 μM																
Incubation Time:	3 days for MOLM-13, 4 days for MV4;11 AML and MOLM-16																
Result:	Inhibited cell proliferation.																
Cell Line:	MV4;11 AML, MOLM-13 and MOLM-16																
Concentration:	50 nM																
Incubation Time:	24 h																
Result:	Degraded CBP, p300 and c-Myc proteins.																
In Vivo	<p>CBP/p300 ligand 4 (10 mg/kg, p.o., once daily for 2 weeks) exhibits antitumor activity in MV4;11 xenograft mice model, with a tumor growth inhibition rate TGI of 65%^[1]. MCE has not independently confirmed the accuracy of these methods. They are for reference only.</p> <table border="1"> <tr> <td>Animal Model:</td> <td>MV4;11 xenograft NOD-SCID mice model^[1]</td> </tr> </table>	Animal Model:	MV4;11 xenograft NOD-SCID mice model ^[1]														
Animal Model:	MV4;11 xenograft NOD-SCID mice model ^[1]																

Dosage:	10 mg/kg
Administration:	p.o., once every day for 2 weeks
Result:	Inhibited tumor growth

REFERENCES

[1]. Hu J, et al., Discovery of Highly Potent and Efficient CBP/p300 Degraders with Strong In Vivo Antitumor Activity. J Med Chem. 2024 May 9;67(9):6952-6986.

Caution: Product has not been fully validated for medical applications. For research use only.

Tel: 609-228-6898

Fax: 609-228-5909

E-mail: tech@MedChemExpress.com

Address: 1 Deer Park Dr, Suite Q, Monmouth Junction, NJ 08852, USA