



SZABO SCANDIC

Part of Europa Biosite

Produktinformation



Forschungsprodukte & Biochemikalien



Zellkultur & Verbrauchsmaterial



Diagnostik & molekulare Diagnostik



Laborgeräte & Service

Weitere Information auf den folgenden Seiten!
See the following pages for more information!



Lieferung & Zahlungsart

siehe unsere [Liefer- und Versandbedingungen](#)

Zuschläge

- Mindermengenzuschlag
- Trockeneiszuschlag
- Gefahrgutzuschlag
- Expressversand

SZABO-SCANDIC HandelsgmbH

Quellenstraße 110, A-1100 Wien

T. +43(0)1 489 3961-0

F. +43(0)1 489 3961-7

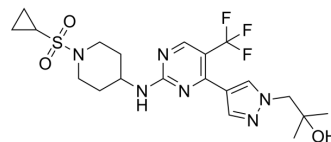
mail@szabo-scandic.com

www.szabo-scandic.com

[linkedin.com/company/szaboscandic](https://www.linkedin.com/company/szaboscandic) 

CDK2-IN-23

Cat. No.:	HY-162255	
CAS No.:	2488073-20-5	
Molecular Formula:	C ₂₀ H ₂₇ F ₃ N ₆ O ₃ S	
Molecular Weight:	488.53	
Target:	CDK	
Pathway:	Cell Cycle/DNA Damage	
Storage:	Powder	-20°C 3 years
	In solvent	-80°C 6 months
		-20°C 1 month



SOLVENT & SOLUBILITY

In Vitro

DMSO : 100 mg/mL (204.70 mM; Need ultrasonic)

Concentration	Mass		
	1 mg	5 mg	10 mg
1 mM	2.0470 mL	10.2348 mL	20.4696 mL
5 mM	0.4094 mL	2.0470 mL	4.0939 mL
10 mM	0.2047 mL	1.0235 mL	2.0470 mL

Please refer to the solubility information to select the appropriate solvent.

In Vivo

- Add each solvent one by one: 10% DMSO >> 40% PEG300 >> 5% Tween-80 >> 45% saline
Solubility: ≥ 5 mg/mL (10.23 mM); Clear solution
- Add each solvent one by one: 10% DMSO >> 90% (20% SBE-β-CD in saline)
Solubility: ≥ 5 mg/mL (10.23 mM); Clear solution

BIOLOGICAL ACTIVITY

Description

CDK2-IN-23 (Compound 17) is a kinase selective and highly potent CDK2 inhibitor (IC₅₀ = 0.29 nM). CDK2-IN-23 shows the pharmacodynamic inhibition of CDK2 in CCNE1-amplified mouse models. CDK2-IN-23 can be used for the research of cancer [1].

REFERENCES

- [1]. Hummel JR, et al. Discovery of (4-Pyrazolyl)-2-aminopyrimidines as Potent and Selective Inhibitors of Cyclin-Dependent Kinase 2. J Med Chem. 2024 Feb 22;67(4):3112-3126.

Caution: Product has not been fully validated for medical applications. For research use only.

Tel: 609-228-6898

Fax: 609-228-5909

E-mail: tech@MedChemExpress.com

Address: 1 Deer Park Dr, Suite Q, Monmouth Junction, NJ 08852, USA