



SZABO SCANDIC

Part of Europa Biosite

Produktinformation



Forschungsprodukte & Biochemikalien



Zellkultur & Verbrauchsmaterial



Diagnostik & molekulare Diagnostik



Laborgeräte & Service

Weitere Information auf den folgenden Seiten!
See the following pages for more information!



Lieferung & Zahlungsart

siehe unsere [Liefer- und Versandbedingungen](#)

Zuschläge

- Mindermengenzuschlag
- Trockeneiszuschlag
- Gefahrgutzuschlag
- Expressversand

SZABO-SCANDIC HandelsgmbH

Quellenstraße 110, A-1100 Wien

T. +43(0)1 489 3961-0

F. +43(0)1 489 3961-7

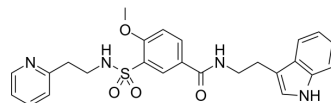
mail@szabo-scandic.com

www.szabo-scandic.com

[linkedin.com/company/szaboscandic](https://www.linkedin.com/company/szaboscandic) 

Z32439948

Cat. No.:	HY-162340
CAS No.:	920845-86-9
Molecular Formula:	C ₂₅ H ₂₆ N ₄ O ₄ S
Molecular Weight:	478.56
Target:	Cholinesterase (ChE)
Pathway:	Neuronal Signaling
Storage:	Please store the product under the recommended conditions in the Certificate of Analysis.



BIOLOGICAL ACTIVITY

Description	Z32439948 is a butyrylcholinesterase (BChE) inhibitor (IC ₅₀ : 1.4 μM, hBChE) and is a derivative of m-sulfamoylbenzamide. Z32439948 also exhibited neuroprotective effects against glutamate in SH-SY5Y cells ^[1] .								
IC₅₀ & Target	BChE 1.4 μM (IC ₅₀ , ^[1])								
In Vitro	Z32439948 (1-5 μM; 48 h) has neuroprotective effects on glutamate (31 mM)-induced SH-SY5Y cell death ^[1] . MCE has not independently confirmed the accuracy of these methods. They are for reference only. Cell Viability Assay ^[1] <table border="1" data-bbox="345 1163 1515 1394"> <tr> <td>Cell Line:</td> <td>SH-SY5Y, BV2 cells</td> </tr> <tr> <td>Concentration:</td> <td>1 μM, 2 μM, 5 μM</td> </tr> <tr> <td>Incubation Time:</td> <td>48 h; with or without 31 mM Glutamate</td> </tr> <tr> <td>Result:</td> <td>Protected cell from Glutamate induced damage.</td> </tr> </table>	Cell Line:	SH-SY5Y, BV2 cells	Concentration:	1 μM, 2 μM, 5 μM	Incubation Time:	48 h; with or without 31 mM Glutamate	Result:	Protected cell from Glutamate induced damage.
Cell Line:	SH-SY5Y, BV2 cells								
Concentration:	1 μM, 2 μM, 5 μM								
Incubation Time:	48 h; with or without 31 mM Glutamate								
Result:	Protected cell from Glutamate induced damage.								

REFERENCES

[1]. Lu X, et al. Discovery, Structure-Based Modification, In Vitro, In Vivo, and In Silico Exploration of m-Sulfamoyl Benzoamide Derivatives as Selective Butyrylcholinesterase Inhibitors for Treating Alzheimer's Disease. ACS Chem Neurosci. 2024 Mar 20;15(6):1135-1156.

Caution: Product has not been fully validated for medical applications. For research use only.

Tel: 609-228-6898

Fax: 609-228-5909

E-mail: tech@MedChemExpress.com

Address: 1 Deer Park Dr, Suite Q, Monmouth Junction, NJ 08852, USA