



SZABO SCANDIC

Part of Europa Biosite

Produktinformation



Forschungsprodukte & Biochemikalien



Zellkultur & Verbrauchsmaterial



Diagnostik & molekulare Diagnostik



Laborgeräte & Service

Weitere Information auf den folgenden Seiten!
See the following pages for more information!



Lieferung & Zahlungsart

siehe unsere [Liefer- und Versandbedingungen](#)

Zuschläge

- Mindermengenzuschlag
- Trockeneiszuschlag
- Gefahrgutzuschlag
- Expressversand

SZABO-SCANDIC HandelsgmbH

Quellenstraße 110, A-1100 Wien

T. +43(0)1 489 3961-0

F. +43(0)1 489 3961-7

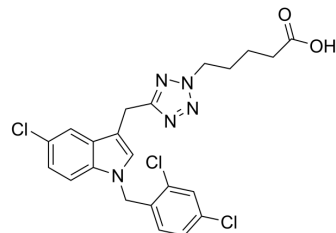
mail@szabo-scandic.com

www.szabo-scandic.com

[linkedin.com/company/szaboscandic](https://www.linkedin.com/company/szaboscandic) 

cPLA₂α-IN-2

Cat. No.:	HY-162368
Molecular Formula:	C ₂₂ H ₂₀ Cl ₃ N ₅ O ₂
Molecular Weight:	492.79
Target:	Phospholipase
Pathway:	Metabolic Enzyme/Protease
Storage:	Please store the product under the recommended conditions in the Certificate of Analysis.



BIOLOGICAL ACTIVITY

Description

cPLA₂α-IN-2 (Compound 122) is an inhibitor of cytosolic phospholipase A₂α (cPLA₂α)^[1].

REFERENCES

[1]. Meyer Zu Vilsendorf I, et al. 1-Benzylindoles as inhibitors of cytosolic phospholipase A₂α: synthesis, biological activity, aqueous solubility, and cell permeability. RSC Med Chem. 2023;15(2):641-659. Published 2023 Dec 13.

Caution: Product has not been fully validated for medical applications. For research use only.

Tel: 609-228-6898

Fax: 609-228-5909

E-mail: tech@MedChemExpress.com

Address: 1 Deer Park Dr, Suite Q, Monmouth Junction, NJ 08852, USA