



SZABO SCANDIC

Part of Europa Biosite

Produktinformation



Forschungsprodukte & Biochemikalien



Zellkultur & Verbrauchsmaterial



Diagnostik & molekulare Diagnostik



Laborgeräte & Service

Weitere Information auf den folgenden Seiten!
See the following pages for more information!



Lieferung & Zahlungsart

siehe unsere [Liefer- und Versandbedingungen](#)

Zuschläge

- Mindermengenzuschlag
- Trockeneiszuschlag
- Gefahrgutzuschlag
- Expressversand

SZABO-SCANDIC HandelsgmbH

Quellenstraße 110, A-1100 Wien

T. +43(0)1 489 3961-0

F. +43(0)1 489 3961-7

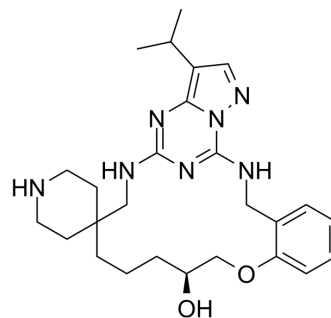
mail@szabo-scandic.com

www.szabo-scandic.com

[linkedin.com/company/szaboscandic](https://www.linkedin.com/company/szaboscandic)

CDK7-IN-27

Cat. No.:	HY-162416
Molecular Formula:	C ₂₆ H ₃₇ N ₇ O ₂
Molecular Weight:	479.62
Target:	CDK
Pathway:	Cell Cycle/DNA Damage
Storage:	Please store the product under the recommended conditions in the Certificate of Analysis.



BIOLOGICAL ACTIVITY

Description	CDK7-IN-27 (Compound 37) is a selective inhibitor for cyclin-dependent kinase 7 (CDK7), with K _i of 3 nM. CDK7-IN-27 arrests the cell cycle at G ₀ /G ₁ phase ^[1] .																	
IC₅₀ & Target	CDK7 3 nM (IC ₅₀)	CDK2 19.4 nM (IC ₅₀)																
In Vitro	<p>CDK7-IN-27 (0.04-10 μM, 5 days) inhibits proliferations of MDA-MB-453 cells with EC₅₀ of 1.49 μM^[1].</p> <p>CDK7-IN-27 (1 μM, 24 h) exhibits good metabolic stability in liver microsomes in mouse and human, with a half-time of 38.5 min and 34.1 min^[1].</p> <p>CDK7-IN-27 (0-1 μM, 24 h) suppresses the phosphorylation of retinoblastoma (Rb) protein through CDK7 inhibition, and thus arrests the cell cycle at G₀/G₁ phase^[1].</p> <p>MCE has not independently confirmed the accuracy of these methods. They are for reference only.</p> <p>Western Blot Analysis^[1]</p> <table border="1"> <tr> <td>Cell Line:</td> <td>MDA-MB-453</td> </tr> <tr> <td>Concentration:</td> <td>0-1 μM</td> </tr> <tr> <td>Incubation Time:</td> <td>24 h</td> </tr> <tr> <td>Result:</td> <td>Inhibited phosphorylation of Rb protein at Ser780, 807/811, and Thr826.</td> </tr> </table> <p>Cell Viability Assay^[1]</p> <table border="1"> <tr> <td>Cell Line:</td> <td>MDA-MB-453</td> </tr> <tr> <td>Concentration:</td> <td>0.04-10 μM</td> </tr> <tr> <td>Incubation Time:</td> <td>5 days</td> </tr> <tr> <td>Result:</td> <td>Suppressed the cancer cell proliferation.</td> </tr> </table>		Cell Line:	MDA-MB-453	Concentration:	0-1 μM	Incubation Time:	24 h	Result:	Inhibited phosphorylation of Rb protein at Ser780, 807/811, and Thr826.	Cell Line:	MDA-MB-453	Concentration:	0.04-10 μM	Incubation Time:	5 days	Result:	Suppressed the cancer cell proliferation.
Cell Line:	MDA-MB-453																	
Concentration:	0-1 μM																	
Incubation Time:	24 h																	
Result:	Inhibited phosphorylation of Rb protein at Ser780, 807/811, and Thr826.																	
Cell Line:	MDA-MB-453																	
Concentration:	0.04-10 μM																	
Incubation Time:	5 days																	
Result:	Suppressed the cancer cell proliferation.																	

REFERENCES

Caution: Product has not been fully validated for medical applications. For research use only.

Tel: 609-228-6898

Fax: 609-228-5909

E-mail: tech@MedChemExpress.com

Address: 1 Deer Park Dr, Suite Q, Monmouth Junction, NJ 08852, USA