



SZABO SCANDIC

Part of Europa Biosite

Produktinformation



Forschungsprodukte & Biochemikalien



Zellkultur & Verbrauchsmaterial



Diagnostik & molekulare Diagnostik



Laborgeräte & Service

Weitere Information auf den folgenden Seiten!
See the following pages for more information!



Lieferung & Zahlungsart

siehe unsere [Liefer- und Versandbedingungen](#)

Zuschläge

- Mindermengenzuschlag
- Trockeneiszuschlag
- Gefahrgutzuschlag
- Expressversand

SZABO-SCANDIC HandelsgmbH

Quellenstraße 110, A-1100 Wien

T. +43(0)1 489 3961-0

F. +43(0)1 489 3961-7

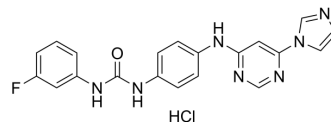
mail@szabo-scandic.com

www.szabo-scandic.com

[linkedin.com/company/szaboscandic](https://www.linkedin.com/company/szaboscandic) 

Miro1 Reducer

Cat. No.:	HY-163172
CAS No.:	2624336-91-8
Molecular Formula:	C ₂₀ H ₁₇ ClFN ₇ O
Molecular Weight:	425.85
Target:	Others
Pathway:	Others
Storage:	-20°C, sealed storage, away from moisture * In solvent : -80°C, 6 months; -20°C, 1 month (sealed storage, away from moisture)



SOLVENT & SOLUBILITY

In Vitro

DMSO : 42.58 mg/mL (99.99 mM; Need ultrasonic and warming)

Concentration	Mass			
	1 mg	5 mg	10 mg	
1 mM	2.3482 mL	11.7412 mL	23.4824 mL	
5 mM	0.4696 mL	2.3482 mL	4.6965 mL	
10 mM	0.2348 mL	1.1741 mL	2.3482 mL	

Please refer to the solubility information to select the appropriate solvent.

BIOLOGICAL ACTIVITY

Description

Miro1 Reducer is a small molecule that can repair this defect of Miro1 in Parkinson's disease (PD) fibroblasts. Miro1 Reducer reduces the delayed mitophagy phenotype in PD fibroblasts. Miro1 Reducer reduces Miro1 protein levels in dose-dependent manner (IC₅₀ = 7.8 mM)^[1].

REFERENCES

[1]. Hsieh CH, et al. Miro1 Marks Parkinson's Disease Subset and Miro1 Reducer Rescues Neuron Loss in Parkinson's Models. Cell Metab. 2019 Dec 3;30(6):1131-1140.e7.

Caution: Product has not been fully validated for medical applications. For research use only.

Tel: 609-228-6898

Fax: 609-228-5909

E-mail: tech@MedChemExpress.com

Address: 1 Deer Park Dr, Suite Q, Monmouth Junction, NJ 08852, USA