



SZABO SCANDIC

Part of Europa Biosite

Produktinformation



Forschungsprodukte & Biochemikalien



Zellkultur & Verbrauchsmaterial



Diagnostik & molekulare Diagnostik



Laborgeräte & Service

Weitere Information auf den folgenden Seiten!
See the following pages for more information!



Lieferung & Zahlungsart

siehe unsere [Liefer- und Versandbedingungen](#)

Zuschläge

- Mindermengenzuschlag
- Trockeneiszuschlag
- Gefahrgutzuschlag
- Expressversand

SZABO-SCANDIC HandelsgmbH

Quellenstraße 110, A-1100 Wien

T. +43(0)1 489 3961-0

F. +43(0)1 489 3961-7

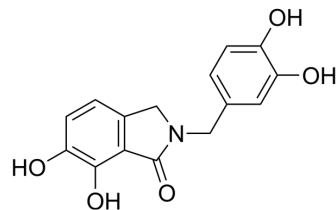
mail@szabo-scandic.com

www.szabo-scandic.com

[linkedin.com/company/szaboscandic](https://www.linkedin.com/company/szaboscandic) 

Cap-dependent endonuclease-IN-28

Cat. No.:	HY-163621
Molecular Formula:	C ₁₅ H ₁₃ NO ₅
Molecular Weight:	287.27
Target:	Influenza Virus
Pathway:	Anti-infection
Storage:	Please store the product under the recommended conditions in the Certificate of Analysis.



BIOLOGICAL ACTIVITY

Description

Cap-dependent endonuclease-IN-28 (Compound 11) is a potent cap-dependent endonuclease (CEN) inhibitor. Cap-dependent endonuclease-IN-28 inhibits CEN of TOSV, ANDV, and LACV viruses with IC₅₀ values of 2.4, 0.5, and 4 μM, respectively^[1].

REFERENCES

[1]. Miglioli F, et al. Inhibitory interactions of the 2,3-dihydro-6,7-dihydroxy-1H-indolizino[1,2-a]pyridin-5(1H)-one scaffold with Bunyavirales cap-snatching endonucleases expose relevant drug design features. *Eur J Med Chem.* 2024 Jun 5;272:116467.

Caution: Product has not been fully validated for medical applications. For research use only.

Tel: 609-228-6898

Fax: 609-228-5909

E-mail: tech@MedChemExpress.com

Address: 1 Deer Park Dr, Suite Q, Monmouth Junction, NJ 08852, USA