



# SZABO SCANDIC

Part of Europa Biosite

## Produktinformation



Forschungsprodukte & Biochemikalien



Zellkultur & Verbrauchsmaterial



Diagnostik & molekulare Diagnostik



Laborgeräte & Service

Weitere Information auf den folgenden Seiten!  
See the following pages for more information!



### Lieferung & Zahlungsart

siehe unsere [Liefer- und Versandbedingungen](#)

### Zuschläge

- Mindermengenzuschlag
- Trockeneiszuschlag
- Gefahrgutzuschlag
- Expressversand

### SZABO-SCANDIC HandelsgmbH

Quellenstraße 110, A-1100 Wien

T. +43(0)1 489 3961-0

F. +43(0)1 489 3961-7

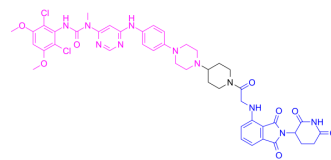
[mail@szabo-scandic.com](mailto:mail@szabo-scandic.com)

[www.szabo-scandic.com](http://www.szabo-scandic.com)

[linkedin.com/company/szaboscandic](https://www.linkedin.com/company/szaboscandic) 

## BR-cpd7

|                    |   |
|--------------------|---|
| Cat. No.:          | HY-163705   |
| Molecular Formula: | C <sub>44</sub> H <sub>47</sub> Cl <sub>2</sub> N <sub>11</sub> O <sub>8</sub>            |
| Molecular Weight:  | 928.82  |
| Target:            | FGFR  |
| Pathway:           | Protein Tyrosine Kinase/RTK   |
| Storage:           | Please store the product under the recommended conditions in the Certificate of Analysis. |



### BIOLOGICAL ACTIVITY

#### Description

BR-cpd7 is a PROTAC degrader for fibroblast growth factor receptor FGFR1/2 with DC<sub>50</sub> of 10 nM. BR-cpd7 arrests cell cycle, inhibits proliferations of FGFR1/2 aberrant activated tumor cells. (Pink: ligand for target protein FGFR-IN-12 (HY-160013); Black: linker; Blue: ligand for E3 ligase Thalidomide-NH-CH<sub>2</sub>-COOH (HY-131717))<sup>[1]</sup>

### REFERENCES

[1]. Kong Y, et al., A Selective FGFR1/2 PROTAC Degradator with Antitumor Activity. Mol Cancer Ther. 2024 Jun 10:OF1-OF11.

**Caution: Product has not been fully validated for medical applications. For research use only.**

Tel: 609-228-6898

Fax: 609-228-5909

E-mail: tech@MedChemExpress.com

Address: 1 Deer Park Dr, Suite Q, Monmouth Junction, NJ 08852, USA