



# SZABO SCANDIC

Part of Europa Biosite

## Produktinformation



Forschungsprodukte & Biochemikalien



Zellkultur & Verbrauchsmaterial



Diagnostik & molekulare Diagnostik



Laborgeräte & Service

Weitere Information auf den folgenden Seiten!  
See the following pages for more information!



### Lieferung & Zahlungsart

siehe unsere [Liefer- und Versandbedingungen](#)

### Zuschläge

- Mindermengenzuschlag
- Trockeneiszuschlag
- Gefahrgutzuschlag
- Expressversand

### SZABO-SCANDIC HandelsgmbH

Quellenstraße 110, A-1100 Wien

T. +43(0)1 489 3961-0

F. +43(0)1 489 3961-7

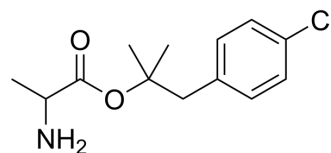
[mail@szabo-scandic.com](mailto:mail@szabo-scandic.com)

[www.szabo-scandic.com](http://www.szabo-scandic.com)

[linkedin.com/company/szaboscandic](https://www.linkedin.com/company/szaboscandic) 

## Alaproclate

Cat. No.:	HY-164011
CAS No.:	60719-82-6
Molecular Formula:	C <sub>13</sub> H <sub>18</sub> ClNO <sub>2</sub>
Molecular Weight:	255.74
Target:	5-HT Receptor
Pathway:	GPCR/G Protein; Neuronal Signaling
Storage:	Please store the product under the recommended conditions in the Certificate of Analysis.



### BIOLOGICAL ACTIVITY

#### Description

Alaproclate is an inhibitor for serotonin (5-HT) reuptake. Alaproclate affects mechanisms that related to cued navigation performance such as sensory, sensorimotor, or motivational factors, impairs spatial navigation ability of rats<sup>[1]</sup>.

### REFERENCES

[1]. Jäkälä P, et al., The effects of alaproclate and p-chlorophenylalanine on cued navigation performance in rats. *J Neural Transm Park Dis Dement Sect.* 1992;4(1):43-52.

**Caution: Product has not been fully validated for medical applications. For research use only.**

Tel: 609-228-6898

Fax: 609-228-5909

E-mail: tech@MedChemExpress.com

Address: 1 Deer Park Dr, Suite Q, Monmouth Junction, NJ 08852, USA