



SZABO SCANDIC

Part of Europa Biosite

Produktinformation



Forschungsprodukte & Biochemikalien



Zellkultur & Verbrauchsmaterial



Diagnostik & molekulare Diagnostik



Laborgeräte & Service

Weitere Information auf den folgenden Seiten!
See the following pages for more information!



Lieferung & Zahlungsart

siehe unsere [Liefer- und Versandbedingungen](#)

Zuschläge

- Mindermengenzuschlag
- Trockeneiszuschlag
- Gefahrgutzuschlag
- Expressversand

SZABO-SCANDIC HandelsgmbH

Quellenstraße 110, A-1100 Wien

T. +43(0)1 489 3961-0

F. +43(0)1 489 3961-7

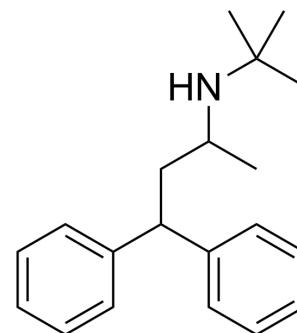
mail@szabo-scandic.com

www.szabo-scandic.com

[linkedin.com/company/szaboscandic](https://www.linkedin.com/company/szaboscandic) 

Terodiline

Cat. No.:	HY-16489
CAS No.:	15793-40-5
Molecular Formula:	C ₂₀ H ₂₇ N
Molecular Weight:	281.44
Target:	Potassium Channel; mAChR; Calcium Channel
Pathway:	Membrane Transporter/Ion Channel; GPCR/G Protein; Neuronal Signaling
Storage:	Please store the product under the recommended conditions in the Certificate of Analysis.



BIOLOGICAL ACTIVITY

Description	Terodiline, an antispasmodic agent, blocks hERG current with the IC ₅₀ of 375 nM. Terodiline has both anticholinergic and calcium antagonist properties, and effectively reduces abnormal bladder contractions caused by detrusor instability. Terodiline can be used for the research of urinary incontinence ^{[1][2]} .									
IC₅₀ & Target	mAChR ^[1] Ca ²⁺ channel ^[1]									
In Vivo	<p>Terodiline (80 mg/kg; S.C.) is equipotent in inhibiting intravesical bladder pressure and carbachol-induced salivary secretion (ID₅₀= 24 and 35 mg/kg, respectively), and in increasing pupil diameter (ED₅₀=59 mg/kg)^[1].</p> <p>MCE has not independently confirmed the accuracy of these methods. They are for reference only.</p> <table border="1"> <tr> <td>Animal Model:</td> <td>Female or male Hartley guinea pigs (200-600 g)^[1]</td> </tr> <tr> <td>Dosage:</td> <td>80 mg/kg</td> </tr> <tr> <td>Administration:</td> <td>Administered S.C.</td> </tr> <tr> <td>Result:</td> <td>Yielded an ID₅₀ of 24±6 mg/kg. Higher doses were lethal.</td> </tr> </table>		Animal Model:	Female or male Hartley guinea pigs (200-600 g) ^[1]	Dosage:	80 mg/kg	Administration:	Administered S.C.	Result:	Yielded an ID ₅₀ of 24±6 mg/kg. Higher doses were lethal.
Animal Model:	Female or male Hartley guinea pigs (200-600 g) ^[1]									
Dosage:	80 mg/kg									
Administration:	Administered S.C.									
Result:	Yielded an ID ₅₀ of 24±6 mg/kg. Higher doses were lethal.									

REFERENCES

- [1]. Ruth L Martin, et al. In vitro preclinical cardiac assessment of tolterodine and terodiline: multiple factors predict the clinical experience. J Cardiovasc Pharmacol. 2006 Nov;48(5):199-206.
- [2]. H D Langtry, et al. Terodiline. A review of its pharmacological properties, and therapeutic use in the treatment of urinary incontinence. Drugs. 1990 Nov;40(5):748-61.

Caution: Product has not been fully validated for medical applications. For research use only.

Tel: 609-228-6898

Fax: 609-228-5909

E-mail: tech@MedChemExpress.com

Address: 1 Deer Park Dr, Suite Q, Monmouth Junction, NJ 08852, USA