



# SZABO SCANDIC

Part of Europa Biosite

## Produktinformation



Forschungsprodukte & Biochemikalien



Zellkultur & Verbrauchsmaterial



Diagnostik & molekulare Diagnostik



Laborgeräte & Service

Weitere Information auf den folgenden Seiten!  
See the following pages for more information!



### Lieferung & Zahlungsart

siehe unsere [Liefer- und Versandbedingungen](#)

### Zuschläge

- Mindermengenzuschlag
- Trockeneiszuschlag
- Gefahrgutzuschlag
- Expressversand

### SZABO-SCANDIC HandelsgmbH

Quellenstraße 110, A-1100 Wien

T. +43(0)1 489 3961-0

F. +43(0)1 489 3961-7

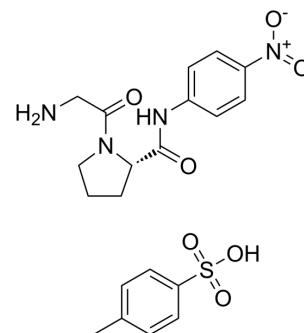
[mail@szabo-scandic.com](mailto:mail@szabo-scandic.com)

[www.szabo-scandic.com](http://www.szabo-scandic.com)

[linkedin.com/company/szaboscandic](https://www.linkedin.com/company/szaboscandic) 

## GPDA

<b>Cat. No.:</b>	HY-16710
<b>CAS No.:</b>	65096-46-0
<b>Molecular Formula:</b>	C <sub>20</sub> H <sub>24</sub> N <sub>4</sub> O <sub>7</sub> S
<b>Molecular Weight:</b>	464.49
<b>Target:</b>	Fluorescent Dye
<b>Pathway:</b>	Others
<b>Storage:</b>	4°C, sealed storage, away from moisture and light * In solvent : -80°C, 6 months; -20°C, 1 month (sealed storage, away from moisture and light)



## SOLVENT & SOLUBILITY

### In Vitro

DMSO : 100 mg/mL (215.29 mM; Need ultrasonic)

Concentration	Solvent	Mass		
		1 mg	5 mg	10 mg
Preparing Stock Solutions	1 mM	2.1529 mL	10.7645 mL	21.5290 mL
	5 mM	0.4306 mL	2.1529 mL	4.3058 mL
	10 mM	0.2153 mL	1.0764 mL	2.1529 mL

Please refer to the solubility information to select the appropriate solvent.

### In Vivo

- Add each solvent one by one: 10% DMSO >> 40% PEG300 >> 5% Tween-80 >> 45% saline  
Solubility: ≥ 2.5 mg/mL (5.38 mM); Clear solution
- Add each solvent one by one: 10% DMSO >> 90% (20% SBE-β-CD in saline)  
Solubility: ≥ 2.5 mg/mL (5.38 mM); Clear solution
- Add each solvent one by one: 10% DMSO >> 90% corn oil  
Solubility: ≥ 2.5 mg/mL (5.38 mM); Clear solution

## BIOLOGICAL ACTIVITY

### Description

GPDA(Glycylproline p-nitroanilide tosylate) is the substrate of X-Prolyl dipeptidyl-aminopeptidase in the enzyme assay.

## REFERENCES

- [1]. Hino M, et al. X-Prolyl dipeptidyl-aminopeptidase activity, with X-proline p-nitroanilides as substrates, in normal and pathological human sera. Clin Chem. 1976 Aug;22(8):1256-61.

**Caution: Product has not been fully validated for medical applications. For research use only.**

Tel: 609-228-6898

Fax: 609-228-5909

E-mail: [tech@MedChemExpress.com](mailto:tech@MedChemExpress.com)

Address: 1 Deer Park Dr, Suite Q, Monmouth Junction, NJ 08852, USA