



SZABO SCANDIC

Part of Europa Biosite

Produktinformation



Forschungsprodukte & Biochemikalien



Zellkultur & Verbrauchsmaterial



Diagnostik & molekulare Diagnostik



Laborgeräte & Service

Weitere Information auf den folgenden Seiten!
See the following pages for more information!



Lieferung & Zahlungsart

siehe unsere [Liefer- und Versandbedingungen](#)

Zuschläge

- Mindermengenzuschlag
- Trockeneiszuschlag
- Gefahrgutzuschlag
- Expressversand

SZABO-SCANDIC HandelsgmbH

Quellenstraße 110, A-1100 Wien

T. +43(0)1 489 3961-0

F. +43(0)1 489 3961-7

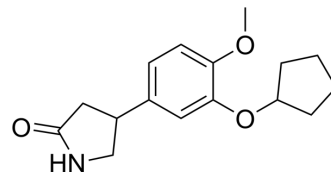
mail@szabo-scandic.com

www.szabo-scandic.com

[linkedin.com/company/szaboscandic](https://www.linkedin.com/company/szaboscandic) 

Rolipram (Standard)

Cat. No.:	HY-16900R
CAS No.:	61413-54-5
Molecular Formula:	C ₁₆ H ₂₁ NO ₃
Molecular Weight:	275.34
Target:	Bacterial; HIV; Phosphodiesterase (PDE)
Pathway:	Anti-infection; Metabolic Enzyme/Protease
Storage:	Please store the product under the recommended conditions in the Certificate of Analysis.



BIOLOGICAL ACTIVITY

Description	Rolipram (Standard) is the analytical standard of Rolipram. This product is intended for research and analytical applications. Rolipram is a selective phosphodiesterases PDE4 inhibitor with IC ₅₀ s of 3 nM, 130 nM and 240 nM for PDE4A, PDE4B, and PDE4D, respectively.
IC ₅₀ & Target	IC ₅₀ : 3 nM (PDE4A), 130 nM (PDE4B), 240 nM (PDE4D) ^[1]

REFERENCES

- [1]. MacKenzie SJ, et al. Action of rolipram on specific PDE4 cAMP phosphodiesterase isoforms and on the phosphorylation of cAMP-response-element-binding protein (CREB) and p38 mitogen-activated protein (MAP) kinase in U937 monocytic cells. *Biochem J.* 2000 Apr
- [2]. Korhonen R, et al. Attenuation of TNF production and experimentally induced inflammation by PDE4 inhibitor rolipram is mediated by MAPK phosphatase-1. *Br J Pharmacol.* 2013 Aug;169(7):1525-36.
- [3]. Shalaby AM, et al. Effect of rolipram, a phosphodiesterase enzyme type-4 inhibitor, on γ-amino butyric acid content of the frontal cortex in mice exposed to chronic mild stress. *J Pharmacol Pharmacother.* 2012 Apr;3(2):132-7.

Caution: Product has not been fully validated for medical applications. For research use only.

Tel: 609-228-6898

Fax: 609-228-5909

E-mail: tech@MedChemExpress.com

Address: 1 Deer Park Dr, Suite Q, Monmouth Junction, NJ 08852, USA