



SZABO SCANDIC

Part of Europa Biosite

Produktinformation



Forschungsprodukte & Biochemikalien



Zellkultur & Verbrauchsmaterial



Diagnostik & molekulare Diagnostik



Laborgeräte & Service

Weitere Information auf den folgenden Seiten!
See the following pages for more information!



Lieferung & Zahlungsart

siehe unsere [Liefer- und Versandbedingungen](#)

Zuschläge

- Mindermengenzuschlag
- Trockeneiszuschlag
- Gefahrgutzuschlag
- Expressversand

SZABO-SCANDIC HandelsgmbH

Quellenstraße 110, A-1100 Wien

T. +43(0)1 489 3961-0

F. +43(0)1 489 3961-7

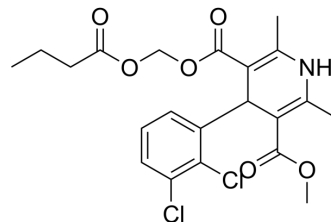
mail@szabo-scandic.com

www.szabo-scandic.com

[linkedin.com/company/szaboscandic](https://www.linkedin.com/company/szaboscandic) 

Clevidipine (Standard)

Cat. No.:	HY-17436R
CAS No.:	167221-71-8
Molecular Formula:	C ₂₁ H ₂₃ Cl ₂ NO ₆
Molecular Weight:	456.32
Target:	Calcium Channel
Pathway:	Membrane Transporter/Ion Channel; Neuronal Signaling
Storage:	Please store the product under the recommended conditions in the Certificate of Analysis.



BIOLOGICAL ACTIVITY

Description

Clevidipine (Standard) is the analytical standard of Clevidipine. This product is intended for research and analytical applications. Clevidipine is a short-acting dihydropyridine calcium channel antagonist (IC₅₀= 7.1 nM, V(H) = -40 mV).

REFERENCES

- [1]. Yi X, Vivien B, Lynch C 3rd. Clevidipine blockade of L-type Ca²⁺ currents: steady-state and kinetic electrophysiological studies in guinea pig ventricular myocytes.
- [2]. Huraux C, Makita T, Szlam F, The vasodilator effects of clevidipine on human internal mammary artery. *Anesth Analg*. 1997 Nov;85(5):1000-4.
- [3]. Ericsson H, et al. In vitro hydrolysis rate and protein binding of clevidipine, a new ultrashort-acting calcium antagonist metabolised by esterases, in different animal species and man. *Eur J Pharm Sci*. 1999 Apr;8(1):29-37.
- [4]. Ericsson H, et al. Pharmacokinetics of new calcium channel antagonist clevidipine in the rat, rabbit, and dog and pharmacokinetic/pharmacodynamic relationship in anesthetized dogs. *Drug Metab Dispos*. 1999 May;27(5):558-64.
- [5]. Schwieler JH, et al. Circulatory effects and pharmacology of clevidipine, a novel ultra short acting and vascular selective calcium antagonist, in hypertensive humans. *J Cardiovasc Pharmacol*. 1999 Aug;34(2):268-74.

Caution: Product has not been fully validated for medical applications. For research use only.

Tel: 609-228-6898

Fax: 609-228-5909

E-mail: tech@MedChemExpress.com

Address: 1 Deer Park Dr, Suite Q, Monmouth Junction, NJ 08852, USA