



# SZABO SCANDIC

Part of Europa Biosite

## Produktinformation



Forschungsprodukte & Biochemikalien



Zellkultur & Verbrauchsmaterial



Diagnostik & molekulare Diagnostik



Laborgeräte & Service

Weitere Information auf den folgenden Seiten!  
See the following pages for more information!



### Lieferung & Zahlungsart

siehe unsere [Liefer- und Versandbedingungen](#)

### Zuschläge

- Mindermengenzuschlag
- Trockeneiszuschlag
- Gefahrgutzuschlag
- Expressversand

### SZABO-SCANDIC HandelsgmbH

Quellenstraße 110, A-1100 Wien

T. +43(0)1 489 3961-0

F. +43(0)1 489 3961-7

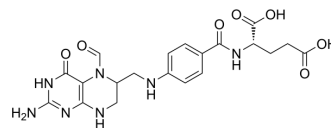
[mail@szabo-scandic.com](mailto:mail@szabo-scandic.com)

[www.szabo-scandic.com](http://www.szabo-scandic.com)

[linkedin.com/company/szaboscandic](https://www.linkedin.com/company/szaboscandic) 

## Folinic acid (Standard)

Cat. No.:	HY-17556R
CAS No.:	58-05-9
Molecular Formula:	C <sub>20</sub> H <sub>23</sub> N <sub>7</sub> O <sub>7</sub>
Molecular Weight:	473.44
Target:	Endogenous Metabolite; Antifolate
Pathway:	Metabolic Enzyme/Protease; Cell Cycle/DNA Damage
Storage:	Please store the product under the recommended conditions in the Certificate of Analysis.



### BIOLOGICAL ACTIVITY

#### Description

Folinic acid (Standard) is the analytical standard of Folinic acid. This product is intended for research and analytical applications. Folinic acid (Leucovorin) is a biological folic acid and is generally administered along with [Methotrexate \(MTX\)](#) (HY-14519) as a rescue agent to decrease MTX-induced toxicity<sup>[1]</sup>.

### REFERENCES

- [1]. Keshava, C., et al., Inhibition of methotrexate-induced chromosomal damage by folinic acid in V79 cells. *Mutat Res*, 1998. 397(2): p. 221-8.
- [2]. Iqbal MP, et al. Effect of methotrexate and folinic acid on skeletal growth in mice. *Acta Paediatr*. 2003 Dec;92(12):1438-44.

**Caution: Product has not been fully validated for medical applications. For research use only.**

Tel: 609-228-6898

Fax: 609-228-5909

E-mail: [tech@MedChemExpress.com](mailto:tech@MedChemExpress.com)

Address: 1 Deer Park Dr, Suite Q, Monmouth Junction, NJ 08852, USA