



SZABO SCANDIC

Part of Europa Biosite

Produktinformation



Forschungsprodukte & Biochemikalien



Zellkultur & Verbrauchsmaterial



Diagnostik & molekulare Diagnostik



Laborgeräte & Service

Weitere Information auf den folgenden Seiten!
See the following pages for more information!



Lieferung & Zahlungsart

siehe unsere [Liefer- und Versandbedingungen](#)

Zuschläge

- Mindermengenzuschlag
- Trockeneiszuschlag
- Gefahrgutzuschlag
- Expressversand

SZABO-SCANDIC HandelsgmbH

Quellenstraße 110, A-1100 Wien

T. +43(0)1 489 3961-0

F. +43(0)1 489 3961-7

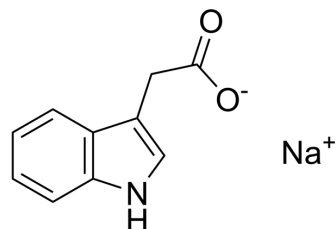
mail@szabo-scandic.com

www.szabo-scandic.com

[linkedin.com/company/szaboscandic](https://www.linkedin.com/company/szaboscandic) 

3-Indoleacetic acid sodium

Cat. No.:	HY-18569A
CAS No.:	6505-45-9
Molecular Formula:	C ₁₀ H ₈ NNaO ₂
Molecular Weight:	197.17
Target:	Endogenous Metabolite
Pathway:	Metabolic Enzyme/Protease
Storage:	4°C, sealed storage, away from moisture and light * In solvent : -80°C, 6 months; -20°C, 1 month (sealed storage, away from moisture and light)



SOLVENT & SOLUBILITY

In Vitro

H₂O : 175 mg/mL (887.56 mM; Need ultrasonic)
DMSO : 125 mg/mL (633.97 mM; Need ultrasonic)

Concentration	Solvent	Mass		
		1 mg	5 mg	10 mg
Preparing Stock Solutions	1 mM	5.0718 mL	25.3588 mL	50.7177 mL
	5 mM	1.0144 mL	5.0718 mL	10.1435 mL
	10 mM	0.5072 mL	2.5359 mL	5.0718 mL

Please refer to the solubility information to select the appropriate solvent.

BIOLOGICAL ACTIVITY

Description

3-Indoleacetic acid sodium (Indole-3-acetic acid sodium) is an endogenous metabolite.

IC₅₀ & Target

Microbial Metabolite

Human Endogenous Metabolite

CUSTOMER VALIDATION

- Proc Natl Acad Sci U S A. 2023 May 16;120(20):e2303479120.
- Diabetes. 2024 Mar 12;db230553.
- Mol Med Rep. 2023 Sep;28(3):159.
- Research Square Preprint. 2021 Aug.

See more customer validations on www.MedChemExpress.com

Caution: Product has not been fully validated for medical applications. For research use only.

Tel: 609-228-6898

Fax: 609-228-5909

E-mail: tech@MedChemExpress.com

Address: 1 Deer Park Dr, Suite Q, Monmouth Junction, NJ 08852, USA