



SZABO SCANDIC

Part of Europa Biosite

Produktinformation



Forschungsprodukte & Biochemikalien



Zellkultur & Verbrauchsmaterial



Diagnostik & molekulare Diagnostik



Laborgeräte & Service

Weitere Information auf den folgenden Seiten!
See the following pages for more information!



Lieferung & Zahlungsart

siehe unsere [Liefer- und Versandbedingungen](#)

Zuschläge

- Mindermengenzuschlag
- Trockeneiszuschlag
- Gefahrgutzuschlag
- Expressversand

SZABO-SCANDIC HandelsgmbH

Quellenstraße 110, A-1100 Wien

T. +43(0)1 489 3961-0

F. +43(0)1 489 3961-7

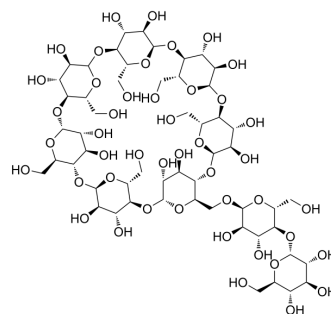
mail@szabo-scandic.com

www.szabo-scandic.com

[linkedin.com/company/szaboscandic](https://www.linkedin.com/company/szaboscandic) 

Mal- β -CD

Cat. No.:	HY-18593		
CAS No.:	104723-60-6		
Molecular Formula:	C ₅₄ H ₉₀ O ₄₅		
Molecular Weight:	1459.27		
Target:	Biochemical Assay Reagents		
Pathway:	Others		
Storage:	Powder	-20°C	3 years
		4°C	2 years
	In solvent	-80°C	2 years
		-20°C	1 year



SOLVENT & SOLUBILITY

In Vitro

DMSO : \geq 100 mg/mL (68.53 mM)
 H₂O : \geq 60.5 mg/mL (41.46 mM)
 * " \geq " means soluble, but saturation unknown.

Preparing Stock Solutions	Solvent		1 mg	5 mg	10 mg
	Concentration	Mass			
	1 mM		0.6853 mL	3.4264 mL	6.8527 mL
	5 mM		0.1371 mL	0.6853 mL	1.3705 mL
	10 mM		0.0685 mL	0.3426 mL	0.6853 mL

Please refer to the solubility information to select the appropriate solvent.

In Vivo

- Add each solvent one by one: PBS
Solubility: 100 mg/mL (68.53 mM); Clear solution; Need ultrasonic
- Add each solvent one by one: 10% DMSO >> 40% PEG300 >> 5% Tween-80 >> 45% saline
Solubility: \geq 2.5 mg/mL (1.71 mM); Clear solution
- Add each solvent one by one: 10% DMSO >> 90% (20% SBE- β -CD in saline)
Solubility: \geq 2.5 mg/mL (1.71 mM); Clear solution
- Add each solvent one by one: 10% DMSO >> 90% corn oil
Solubility: \geq 2.5 mg/mL (1.71 mM); Clear solution

BIOLOGICAL ACTIVITY

Description

Mal- β -CD is a cellular cholesterol modifier which can form soluble inclusion complex with cholesterol.

In Vitro

Mal- β -CD removes cellular cholesterol forming inclusion complexes, while Mal- β -CD-induced lack of cellular cholesterol is

replenished by the addition of cholesterol/Mal- β -CD inclusion complex (CLM) without cytotoxicity^[1].
MCE has not independently confirmed the accuracy of these methods. They are for reference only.

REFERENCES

[1]. Okada Y, et al. Effect of 6-O- α -maltosyl- β cyclodextrin and its cholesterol inclusion complex on cellular cholesterol levels and ABCA1 and ABCG1 expression in mouse mastocytoma P-815 cells. Carbohydr Res. 2012 Aug 1;357:68-74.

Caution: Product has not been fully validated for medical applications. For research use only.

Tel: 609-228-6898

Fax: 609-228-5909

E-mail: tech@MedChemExpress.com

Address: 1 Deer Park Dr, Suite Q, Monmouth Junction, NJ 08852, USA