



# SZABO SCANDIC

Part of Europa Biosite

## Produktinformation



Forschungsprodukte & Biochemikalien



Zellkultur & Verbrauchsmaterial



Diagnostik & molekulare Diagnostik



Laborgeräte & Service

Weitere Information auf den folgenden Seiten!  
See the following pages for more information!



### Lieferung & Zahlungsart

siehe unsere [Liefer- und Versandbedingungen](#)

### Zuschläge

- Mindermengenzuschlag
- Trockeneiszuschlag
- Gefahrgutzuschlag
- Expressversand

### SZABO-SCANDIC HandelsgmbH

Quellenstraße 110, A-1100 Wien

T. +43(0)1 489 3961-0

F. +43(0)1 489 3961-7

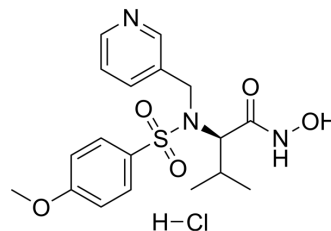
[mail@szabo-scandic.com](mailto:mail@szabo-scandic.com)

[www.szabo-scandic.com](http://www.szabo-scandic.com)

[linkedin.com/company/szaboscandic](https://www.linkedin.com/company/szaboscandic) 

## CGS 27023A

Cat. No.:	HY-18694
CAS No.:	169799-04-6
Molecular Formula:	C <sub>18</sub> H <sub>24</sub> ClN <sub>3</sub> O <sub>5</sub> S
Molecular Weight:	429.92
Target:	MMP
Pathway:	Metabolic Enzyme/Protease
Storage:	Please store the product under the recommended conditions in the Certificate of Analysis.



### BIOLOGICAL ACTIVITY

<b>Description</b>	CGS 27023A is a non-peptidic and orally active MMP inhibitor with the K <sub>i</sub> values of 43, 33, 20 and 8 nM for MMP-3, MMP-1, MMP-2 and MMP-9, respectively. CGS 27023A can be used for study of arthritis <sup>[1]</sup> .			
<b>IC<sub>50</sub> &amp; Target</b>	stromelysins 1 43 nM (Ki)	collagenases 1 33 nM (Ki)	MMP-2 20 nM (Ki)	MMP-9 8 nM (Ki)
<b>In Vivo</b>	CGS 27023A (oral gavage, 75 μmol/kg for 10 h) prevents cartilage degradation in stromelysin-induced rabbit cartilage degradation model <sup>[1]</sup> . MCE has not independently confirmed the accuracy of these methods. They are for reference only.			

### REFERENCES

[1]. MacPherson LJ, et al. Discovery of CGS 27023A, a non-peptidic, potent, and orally active stromelysin inhibitor that blocks cartilage degradation in rabbits. *J Med Chem.* 1997;40(16):2525-2532.

**Caution: Product has not been fully validated for medical applications. For research use only.**

Tel: 609-228-6898

Fax: 609-228-5909

E-mail: tech@MedChemExpress.com

Address: 1 Deer Park Dr, Suite Q, Monmouth Junction, NJ 08852, USA