



SZABO SCANDIC

Part of Europa Biosite

Produktinformation



Forschungsprodukte & Biochemikalien



Zellkultur & Verbrauchsmaterial



Diagnostik & molekulare Diagnostik



Laborgeräte & Service

Weitere Information auf den folgenden Seiten!
See the following pages for more information!



Lieferung & Zahlungsart

siehe unsere [Liefer- und Versandbedingungen](#)

Zuschläge

- Mindermengenzuschlag
- Trockeneiszuschlag
- Gefahrgutzuschlag
- Expressversand

SZABO-SCANDIC HandelsgmbH

Quellenstraße 110, A-1100 Wien

T. +43(0)1 489 3961-0

F. +43(0)1 489 3961-7

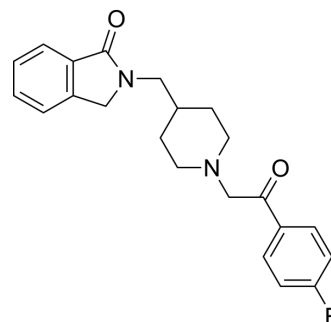
mail@szabo-scandic.com

www.szabo-scandic.com

[linkedin.com/company/szaboscandic](https://www.linkedin.com/company/szaboscandic) 

Roluperidone

Cat. No.:	HY-19469
CAS No.:	359625-79-9
Molecular Formula:	C ₂₂ H ₂₃ N ₂ O ₂
Molecular Weight:	366.43
Target:	5-HT Receptor; Sigma Receptor
Pathway:	GPCR/G Protein; Neuronal Signaling
Storage:	Powder -20°C 3 years 4°C 2 years



* The compound is unstable in solutions, freshly prepared is recommended.

SOLVENT & SOLUBILITY

In Vitro	DMSO : 33.33 mg/mL (90.96 mM; Need ultrasonic)					
		Solvent Concentration	Mass			
	Preparing Stock Solutions			1 mg	5 mg	10 mg
		1 mM		2.7290 mL	13.6452 mL	27.2903 mL
		5 mM		0.5458 mL	2.7290 mL	5.4581 mL
	10 mM		0.2729 mL	1.3645 mL	2.7290 mL	
Please refer to the solubility information to select the appropriate solvent.						
In Vivo	1. Add each solvent one by one: 10% DMSO >> 40% PEG300 >> 5% Tween-80 >> 45% saline Solubility: ≥ 3 mg/mL (8.19 mM); Clear solution					
	2. Add each solvent one by one: 10% DMSO >> 90% corn oil Solubility: ≥ 3 mg/mL (8.19 mM); Clear solution					
	3. Add each solvent one by one: 10% DMSO >> 90% (20% SBE-β-CD in saline) Solubility: ≥ 2.5 mg/mL (6.82 mM); Clear solution					

BIOLOGICAL ACTIVITY

Description	Roluperidone (CYR-101) is a novel cyclic amide derivative that has high equipotent affinities for 5-HT _{2A} and sigma-2 receptors (K _i of 7.53 nM and 8.19 nM for 5-HT _{2A} and sigma-2, respectively).	
IC ₅₀ & Target	5-HT _{2A} Receptor 7.53 nM (K _i)	Sigma-2 Receptor 8.19 nM (K _i)
In Vitro	Roluperidone (CYR-101) also shows binding affinity for α ₁ -adrenergic receptors but low or no affinity for muscarinic, cholinergic, and histaminergic receptors. Although Roluperidone (CYR-101) has no affinities for pre- or postsynaptic	

dopaminergic receptors, it is probable that sigma-2 receptors are implicated in the modulation of dopamine and glutamatergic pathways, as well as in calcium neuronal modulation^[1].
MCE has not independently confirmed the accuracy of these methods. They are for reference only.

CUSTOMER VALIDATION

- Eur J Pharmacol. 2023 Mar 8;175647.

See more customer validations on www.MedChemExpress.com

REFERENCES

[1]. Davidson M, et al. Efficacy and Safety of MIN-101: A 12-Week Randomized, Double-Blind, Placebo-Controlled Trial of a New Drug in Development for the Treatment of Negative Symptoms in Schizophrenia. Am J Psychiatry. 2017 Jul 28;appiajp201717010122.

Caution: Product has not been fully validated for medical applications. For research use only.

Tel: 609-228-6898

Fax: 609-228-5909

E-mail: tech@MedChemExpress.com

Address: 1 Deer Park Dr, Suite Q, Monmouth Junction, NJ 08852, USA