



SZABO SCANDIC

Part of Europa Biosite

Produktinformation



Forschungsprodukte & Biochemikalien



Zellkultur & Verbrauchsmaterial



Diagnostik & molekulare Diagnostik



Laborgeräte & Service

Weitere Information auf den folgenden Seiten!
See the following pages for more information!



Lieferung & Zahlungsart

siehe unsere [Liefer- und Versandbedingungen](#)

Zuschläge

- Mindermengenzuschlag
- Trockeneiszuschlag
- Gefahrgutzuschlag
- Expressversand

SZABO-SCANDIC HandelsgmbH

Quellenstraße 110, A-1100 Wien

T. +43(0)1 489 3961-0

F. +43(0)1 489 3961-7

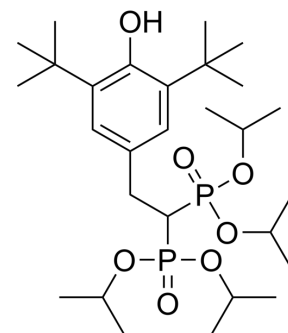
mail@szabo-scandic.com

www.szabo-scandic.com

[linkedin.com/company/szaboscandic](https://www.linkedin.com/company/szaboscandic) 

Apomine

Cat. No.:	HY-19671
CAS No.:	126411-13-0
Molecular Formula:	C ₂₈ H ₅₂ O ₇ P ₂
Molecular Weight:	562.66
Target:	Apoptosis
Pathway:	Apoptosis
Storage:	4°C, protect from light * In solvent : -80°C, 6 months; -20°C, 1 month (protect from light)



SOLVENT & SOLUBILITY

In Vitro	DMSO : 20 mg/mL (35.55 mM); ultrasonic and warming and heat to 60°C					
	Preparing Stock Solutions	Solvent Concentration	Mass			
			1 mg	5 mg	10 mg	
			1 mM	1.7773 mL	8.8864 mL	17.7727 mL
			5 mM	0.3555 mL	1.7773 mL	3.5545 mL
10 mM	0.1777 mL	0.8886 mL	1.7773 mL			
Please refer to the solubility information to select the appropriate solvent.						
In Vivo	1. Add each solvent one by one: 10% DMSO >> 90% corn oil Solubility: ≥ 2 mg/mL (3.55 mM); Clear solution					

BIOLOGICAL ACTIVITY

Description	Apomine (SR-45023A) is an antineoplastic agent that inhibits the mevalonate/isoprenoid pathway in cholesterol synthesis. It can accelerate the degradation of 3-hydroxy-3-methylglutaryl-CoA reductase (HMGR). Apomine can also inhibit the growth of various types of cancer cells, including lung cancer, colon cancer, breast cancer, and skin cancer. In addition, Apomine is able to induce apoptosis in tumor cell lines derived from leukemia, colon cancer, liver cancer, ovarian cancer, and breast cancer ^[1] .
-------------	--

REFERENCES

[1]. Kuehl PJ, et al. Preformulation, formulation, and in vivo efficacy of topically applied apomine. Int J Pharm. 2009;382(1-2):104-110.

Caution: Product has not been fully validated for medical applications. For research use only.

Tel: 609-228-6898

Fax: 609-228-5909

E-mail: tech@MedChemExpress.com

Address: 1 Deer Park Dr, Suite Q, Monmouth Junction, NJ 08852, USA