



# SZABO SCANDIC

Part of Europa Biosite

## Produktinformation



Forschungsprodukte & Biochemikalien



Zellkultur & Verbrauchsmaterial



Diagnostik & molekulare Diagnostik



Laborgeräte & Service

Weitere Information auf den folgenden Seiten!  
See the following pages for more information!



### Lieferung & Zahlungsart

siehe unsere [Liefer- und Versandbedingungen](#)

### Zuschläge

- Mindermengenzuschlag
- Trockeneiszuschlag
- Gefahrgutzuschlag
- Expressversand

### SZABO-SCANDIC HandelsgmbH

Quellenstraße 110, A-1100 Wien

T. +43(0)1 489 3961-0

F. +43(0)1 489 3961-7

[mail@szabo-scandic.com](mailto:mail@szabo-scandic.com)

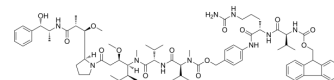
[www.szabo-scandic.com](http://www.szabo-scandic.com)

[linkedin.com/company/szaboscandic](https://www.linkedin.com/company/szaboscandic) 

## Fmoc-Val-Cit-PAB-MMAE

<b>Cat. No.:</b>	HY-19811
<b>CAS No.:</b>	1350456-56-2
<b>Molecular Formula:</b>	C <sub>73</sub> H <sub>104</sub> N <sub>10</sub> O <sub>14</sub>
<b>Molecular Weight:</b>	1345.67
<b>Target:</b>	Drug-Linker Conjugates for ADC; Microtubule/Tubulin
<b>Pathway:</b>	Antibody-drug Conjugate/ADC Related; Cell Cycle/DNA Damage; Cytoskeleton
<b>Storage:</b>	4°C, stored under nitrogen

\* The compound is unstable in solutions, freshly prepared is recommended.



### SOLVENT & SOLUBILITY

#### In Vitro

DMSO : ≥ 30 mg/mL (22.29 mM)  
 \* "≥" means soluble, but saturation unknown.

Preparing Stock Solutions	Solvent Concentration	Mass		
		1 mg	5 mg	10 mg
	1 mM	0.7431 mL	3.7156 mL	7.4312 mL
	5 mM	0.1486 mL	0.7431 mL	1.4862 mL
	10 mM	0.0743 mL	0.3716 mL	0.7431 mL

Please refer to the solubility information to select the appropriate solvent.

#### In Vivo

- Add each solvent one by one: 10% DMSO >> 40% PEG300 >> 5% Tween-80 >> 45% saline  
 Solubility: 5.5 mg/mL (4.09 mM); Suspended solution; Need ultrasonic
- Add each solvent one by one: 10% DMSO >> 90% (20% SBE-β-CD in saline)  
 Solubility: 5.5 mg/mL (4.09 mM); Suspended solution; Need ultrasonic
- Add each solvent one by one: 10% DMSO >> 90% corn oil  
 Solubility: ≥ 5.5 mg/mL (4.09 mM); Clear solution

### BIOLOGICAL ACTIVITY

#### Description

Fmoc-Val-Cit-PAB-MMAE consists the ADCs linker (Fmoc-Val-Cit-PAB) and potent tubulin inhibitor (MMAE). Fmoc-Val-Cit-PAB-MMAE is a agent-linker conjugate for ADC.

#### IC<sub>50</sub> & Target

Auristatin

---

**Caution: Product has not been fully validated for medical applications. For research use only.**

Tel: 609-228-6898

Fax: 609-228-5909

E-mail: [tech@MedChemExpress.com](mailto:tech@MedChemExpress.com)

Address: 1 Deer Park Dr, Suite Q, Monmouth Junction, NJ 08852, USA