



SZABO SCANDIC

Part of Europa Biosite

Produktinformation



Forschungsprodukte & Biochemikalien



Zellkultur & Verbrauchsmaterial



Diagnostik & molekulare Diagnostik



Laborgeräte & Service

Weitere Information auf den folgenden Seiten!
See the following pages for more information!



Lieferung & Zahlungsart

siehe unsere [Liefer- und Versandbedingungen](#)

Zuschläge

- Mindermengenzuschlag
- Trockeneiszuschlag
- Gefahrgutzuschlag
- Expressversand

SZABO-SCANDIC HandelsgmbH

Quellenstraße 110, A-1100 Wien

T. +43(0)1 489 3961-0

F. +43(0)1 489 3961-7

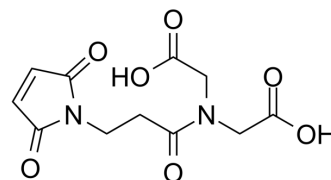
mail@szabo-scandic.com

www.szabo-scandic.com

[linkedin.com/company/szaboscandic](https://www.linkedin.com/company/szaboscandic) 

Mal-amido-(CH₂COOH)₂

Cat. No.:	HY-23642		
CAS No.:	207613-14-7		
Molecular Formula:	C ₁₁ H ₁₂ N ₂ O ₇		
Molecular Weight:	284.22		
Target:	ADC Linker		
Pathway:	Antibody-drug Conjugate/ADC Related		
Storage:	Powder	-20°C	3 years
	In solvent	-80°C	6 months
		-20°C	1 month



SOLVENT & SOLUBILITY

In Vitro

DMSO : 83.33 mg/mL (293.19 mM; ultrasonic and warming and heat to 60°C)

Concentration	Mass		
	1 mg	5 mg	10 mg
1 mM	3.5184 mL	17.5920 mL	35.1840 mL
5 mM	0.7037 mL	3.5184 mL	7.0368 mL
10 mM	0.3518 mL	1.7592 mL	3.5184 mL

Please refer to the solubility information to select the appropriate solvent.

BIOLOGICAL ACTIVITY

Description	Mal-amido-(CH ₂ COOH) ₂ , compound 7a, is a maleimidoethyl-containing intermediate for hydrophilic ADC linker ^[1] .
IC₅₀ & Target	Cleavable
In Vitro	Mal-amido-(CH ₂ COOH) ₂ is an intermediate for linker. Bivalent doxorubicin (DOX)-di-peptides (16a-c) are finally prepared and conjugated to the monoclonal antibody BR96. The dipeptides are cleaved by lysosomal proteases following internalization of the resulting immunoconjugates ^[1] . MCE has not independently confirmed the accuracy of these methods. They are for reference only.
In Vivo	ADC Linker MCE has not independently confirmed the accuracy of these methods. They are for reference only.

REFERENCES

Caution: Product has not been fully validated for medical applications. For research use only.

Tel: 609-228-6898

Fax: 609-228-5909

E-mail: tech@MedChemExpress.com

Address: 1 Deer Park Dr, Suite Q, Monmouth Junction, NJ 08852, USA