



# SZABO SCANDIC

Part of Europa Biosite

## Produktinformation



Forschungsprodukte & Biochemikalien



Zellkultur & Verbrauchsmaterial



Diagnostik & molekulare Diagnostik



Laborgeräte & Service

Weitere Information auf den folgenden Seiten!  
See the following pages for more information!



### Lieferung & Zahlungsart

siehe unsere [Liefer- und Versandbedingungen](#)

### Zuschläge

- Mindermengenzuschlag
- Trockeneiszuschlag
- Gefahrgutzuschlag
- Expressversand

### SZABO-SCANDIC HandelsgmbH

Quellenstraße 110, A-1100 Wien

T. +43(0)1 489 3961-0

F. +43(0)1 489 3961-7

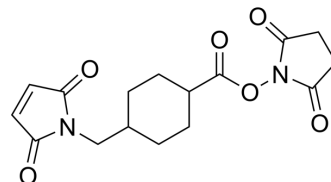
[mail@szabo-scandic.com](mailto:mail@szabo-scandic.com)

[www.szabo-scandic.com](http://www.szabo-scandic.com)

[linkedin.com/company/szaboscandic](https://www.linkedin.com/company/szaboscandic) 

## SMCC

<b>Cat. No.:</b>	HY-42360
<b>CAS No.:</b>	64987-85-5
<b>Molecular Formula:</b>	C <sub>16</sub> H <sub>18</sub> N <sub>2</sub> O <sub>6</sub>
<b>Molecular Weight:</b>	334.32
<b>Target:</b>	ADC Linker
<b>Pathway:</b>	Antibody-drug Conjugate/ADC Related
<b>Storage:</b>	4°C, sealed storage, away from moisture and light * In solvent : -80°C, 6 months; -20°C, 1 month (sealed storage, away from moisture and light)



## SOLVENT & SOLUBILITY

### In Vitro

DMSO : 25 mg/mL (74.78 mM; Need ultrasonic)  
H<sub>2</sub>O : < 0.1 mg/mL (ultrasonic) (insoluble)

	Solvent Concentration	Mass		
		1 mg	5 mg	10 mg
Preparing Stock Solutions	1 mM	2.9911 mL	14.9557 mL	29.9115 mL
	5 mM	0.5982 mL	2.9911 mL	5.9823 mL
	10 mM	0.2991 mL	1.4956 mL	2.9911 mL

Please refer to the solubility information to select the appropriate solvent.

### In Vivo

- Add each solvent one by one: 10% DMSO >> 40% PEG300 >> 5% Tween-80 >> 45% saline  
Solubility: ≥ 2.5 mg/mL (7.48 mM); Clear solution
- Add each solvent one by one: 10% DMSO >> 90% (20% SBE-β-CD in saline)  
Solubility: ≥ 2.5 mg/mL (7.48 mM); Clear solution
- Add each solvent one by one: 10% DMSO >> 90% corn oil  
Solubility: ≥ 2.5 mg/mL (7.48 mM); Clear solution

## BIOLOGICAL ACTIVITY

### Description

SMCC is a protein crosslinker. SMCC-conjugated antigen coupled spleen cells to induce antigen-specific immune responses [1].

### In Vitro

SMCC or sulfo-SMCC can use to conjugate keyhole limpet hemocyanin (KLH) and ovalbumin (OVA). In the the conjugation system, 300 μl KLH or OVA (3 mg) and 30 μl SMCC or Sulfo-SMCC (the final concentration of 0.1 mM) are added in PBS with final volume of 3 ml<sup>[1]</sup>.

MCE has not independently confirmed the accuracy of these methods. They are for reference only.

---

**In Vivo**

Using the SMCC-conjugation method is able to induce potent immune responses to whole protein or peptide antigens by injection of antigen-coupled syngeneic splenic mononuclear cells in mice<sup>[1]</sup>.  
MCE has not independently confirmed the accuracy of these methods. They are for reference only.

---

**REFERENCES**

[1]. Guo Y, et al. Potent antigen-specific immune response induced by infusion of spleen cells coupled with succinimidyl-4-(N-maleimidomethyl cyclohexane)-1-carboxylate (SMCC) conjugated antigens. *Int Immunopharmacol.* 2016 Feb;31:158-68.

---

**Caution: Product has not been fully validated for medical applications. For research use only.**

Tel: 609-228-6898

Fax: 609-228-5909

E-mail: [tech@MedChemExpress.com](mailto:tech@MedChemExpress.com)

Address: 1 Deer Park Dr, Suite Q, Monmouth Junction, NJ 08852, USA