



# SZABO SCANDIC

Part of Europa Biosite

## Produktinformation



Forschungsprodukte & Biochemikalien



Zellkultur & Verbrauchsmaterial



Diagnostik & molekulare Diagnostik



Laborgeräte & Service

Weitere Information auf den folgenden Seiten!  
See the following pages for more information!



### Lieferung & Zahlungsart

siehe unsere [Liefer- und Versandbedingungen](#)

### Zuschläge

- Mindermengenzuschlag
- Trockeneiszuschlag
- Gefahrgutzuschlag
- Expressversand

### SZABO-SCANDIC HandelsgmbH

Quellenstraße 110, A-1100 Wien

T. +43(0)1 489 3961-0

F. +43(0)1 489 3961-7

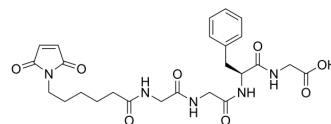
[mail@szabo-scandic.com](mailto:mail@szabo-scandic.com)

[www.szabo-scandic.com](http://www.szabo-scandic.com)

[linkedin.com/company/szaboscandic](https://www.linkedin.com/company/szaboscandic) 

## MC-Gly-Gly-Phe-Gly

Cat. No.:	HY-44246
CAS No.:	2413428-36-9
Molecular Formula:	C <sub>25</sub> H <sub>31</sub> N <sub>5</sub> O <sub>8</sub>
Molecular Weight:	529.54
Target:	ADC Linker
Pathway:	Antibody-drug Conjugate/ADC Related
Storage:	4°C, stored under nitrogen * In solvent : -80°C, 6 months; -20°C, 1 month (stored under nitrogen)



### SOLVENT & SOLUBILITY

#### In Vitro

DMSO : 125 mg/mL (236.05 mM; Need ultrasonic)

Preparing Stock Solutions	Solvent		Mass		
	Concentration		1 mg	5 mg	10 mg
	1 mM		1.8884 mL	9.4422 mL	18.8843 mL
	5 mM		0.3777 mL	1.8884 mL	3.7769 mL
	10 mM		0.1888 mL	0.9442 mL	1.8884 mL

Please refer to the solubility information to select the appropriate solvent.

### BIOLOGICAL ACTIVITY

#### Description

MC-Gly-Gly-Phe-Gly is a cleavable ADC linker used for antibody-drug conjugates (ADCs).

#### IC<sub>50</sub> & Target

Cleavable Linker

**Caution: Product has not been fully validated for medical applications. For research use only.**

Tel: 609-228-6898

Fax: 609-228-5909

E-mail: tech@MedChemExpress.com

Address: 1 Deer Park Dr, Suite Q, Monmouth Junction, NJ 08852, USA