



SZABO SCANDIC

Part of Europa Biosite

Produktinformation



Forschungsprodukte & Biochemikalien



Zellkultur & Verbrauchsmaterial



Diagnostik & molekulare Diagnostik



Laborgeräte & Service

Weitere Information auf den folgenden Seiten!
See the following pages for more information!



Lieferung & Zahlungsart

siehe unsere [Liefer- und Versandbedingungen](#)

Zuschläge

- Mindermengenzuschlag
- Trockeneiszuschlag
- Gefahrgutzuschlag
- Expressversand

SZABO-SCANDIC HandelsgmbH

Quellenstraße 110, A-1100 Wien

T. +43(0)1 489 3961-0

F. +43(0)1 489 3961-7

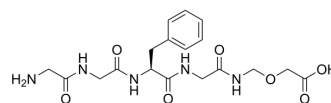
mail@szabo-scandic.com

www.szabo-scandic.com

[linkedin.com/company/szaboscandic](https://www.linkedin.com/company/szaboscandic) 

Gly-Gly-Phe-Gly-NH-CH₂-O-CH₂COOH (GMP)

Cat. No.:	HY-45672G
CAS No.:	1599440-20-6
Molecular Formula:	C ₁₈ H ₂₅ N ₅ O ₇
Molecular Weight:	423.42
Target:	ADC Linker
Pathway:	Antibody-drug Conjugate/ADC Related
Storage:	Please store the product under the recommended conditions in the Certificate of Analysis.



BIOLOGICAL ACTIVITY

Description

Gly-Gly-Phe-Gly-NH-CH₂-O-CH₂COOH GMP is a GMP grade Gly-Gly-Phe-Gly-NH-CH₂-O-CH₂COOH (HY-45672). Gly-Gly-Phe-Gly-NH-CH₂-O-CH₂COOH is an ADC Linker that can be used to synthesize Drug-Linker Conjugates for ADC. Especially for the synthesis of Deruxtecan (HY-13631E), a toxic drug-linker conjugate^[1].

REFERENCES

[1]. Masuda, et al. Preparation of antibody-drug conjugates for cancer therapy. World Intellectual Property Organization, WO2014057687 A1. 2014-04-17.

Caution: Product has not been fully validated for medical applications. For research use only.

Tel: 609-228-6898

Fax: 609-228-5909

E-mail: tech@MedChemExpress.com

Address: 1 Deer Park Dr, Suite Q, Monmouth Junction, NJ 08852, USA