



SZABO SCANDIC

Part of Europa Biosite

Produktinformation



Forschungsprodukte & Biochemikalien



Zellkultur & Verbrauchsmaterial



Diagnostik & molekulare Diagnostik



Laborgeräte & Service

Weitere Information auf den folgenden Seiten!
See the following pages for more information!



Lieferung & Zahlungsart

siehe unsere [Liefer- und Versandbedingungen](#)

Zuschläge

- Mindermengenzuschlag
- Trockeneiszuschlag
- Gefahrgutzuschlag
- Expressversand

SZABO-SCANDIC HandelsgmbH

Quellenstraße 110, A-1100 Wien

T. +43(0)1 489 3961-0

F. +43(0)1 489 3961-7

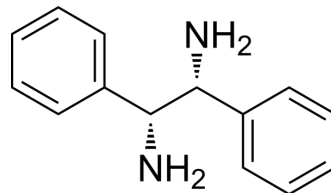
mail@szabo-scandic.com

www.szabo-scandic.com

[linkedin.com/company/szaboscandic](https://www.linkedin.com/company/szaboscandic)

(+)-1,2-Diphenylethylenediamine

Cat. No.:	HY-79548
CAS No.:	35132-20-8
Molecular Formula:	C ₁₄ H ₁₆ N ₂
Molecular Weight:	212.29
Target:	Biochemical Assay Reagents
Pathway:	Others
Storage:	4°C, protect from light, stored under nitrogen * In solvent : -80°C, 6 months; -20°C, 1 month (protect from light, stored under nitrogen)



BIOLOGICAL ACTIVITY

Description	((1R,2R)-2-Amino-1,2-diphenylethyl)amine is a biochemical reagent that can be used as a biological material or organic compound for life science related research.
In Vitro	(1R,2R)-(+)-1,2-Diphenyl-1,2-ethanediamine is used as chiral solvation agent for determination of enantiomeric excess of chiral acids by NMR. It is used in various catalyst systems for asymmetric reactions. MCE has not independently confirmed the accuracy of these methods. They are for reference only.

Caution: Product has not been fully validated for medical applications. For research use only.

Tel: 609-228-6898

Fax: 609-228-5909

E-mail: tech@MedChemExpress.com

Address: 1 Deer Park Dr, Suite Q, Monmouth Junction, NJ 08852, USA