



SZABO SCANDIC

Part of Europa Biosite

Produktinformation



Forschungsprodukte & Biochemikalien



Zellkultur & Verbrauchsmaterial



Diagnostik & molekulare Diagnostik



Laborgeräte & Service

Weitere Information auf den folgenden Seiten!
See the following pages for more information!



Lieferung & Zahlungsart

siehe unsere [Liefer- und Versandbedingungen](#)

Zuschläge

- Mindermengenzuschlag
- Trockeneiszuschlag
- Gefahrgutzuschlag
- Expressversand

SZABO-SCANDIC HandelsgmbH

Quellenstraße 110, A-1100 Wien

T. +43(0)1 489 3961-0

F. +43(0)1 489 3961-7

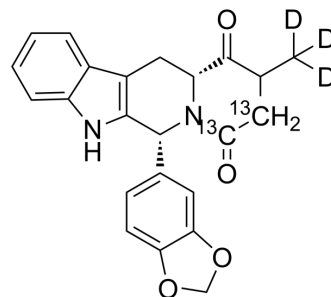
mail@szabo-scandic.com

www.szabo-scandic.com

[linkedin.com/company/szaboscandic](https://www.linkedin.com/company/szaboscandic) 

Tadalafil-¹³C₂,d₃

Cat. No.:	HY-90009AS
Molecular Formula:	C ₂₁ ¹³ C ₂ H ₁₇ D ₃ N ₂ O ₄
Molecular Weight:	393.42
Target:	Apoptosis; Phosphodiesterase (PDE); Isotope-Labeled Compounds
Pathway:	Apoptosis; Metabolic Enzyme/Protease; Others
Storage:	Please store the product under the recommended conditions in the Certificate of Analysis.



BIOLOGICAL ACTIVITY

Description	Tadalafil- ¹³ C ₂ ,d ₃ is ¹³ C and deuterated labeled Tadalafil (HY-90009A). Tadalafil (IC-351) is a PDE5 inhibitor with an IC ₅₀ value of 1.8 nM.
In Vitro	<p>Stable heavy isotopes of hydrogen, carbon, and other elements have been incorporated into drug molecules, largely as tracers for quantitation during the drug development process. Deuteration has gained attention because of its potential to affect the pharmacokinetic and metabolic profiles of drugs^[1].</p> <p>Biochemical potencies (affinities) of these compounds for PDE5 determined by IC(50), K(D) (isotherm), K(D) (dissociation rate), and K(D) ((1/2) EC(50)), respectively, were the following: sildenafil (3.7 +/- 1.4, 4.8 +/- 0.80, 3.7 +/- 0.29, and 11.7 +/- 0.70 nM), tadalafil (1.8 +/- 0.40, 2.4 +/- 0.60, 1.9 +/- 0.37, and 2.7 +/- 0.25 nM); and vardenafil (0.091 +/- 0.031, 0.38 +/- 0.07, 0.27 +/- 0.01, and 0.42 +/- 0.10 nM). Thus, absolute potency values were similar for each inhibitor, and relative potencies were vardenafil >> tadalafil > sildenafil^[2].</p> <p>0.5 ml tadalafil solutions with different concentrations were added (0.2, 0.1, 0.05 and 0.025 µg ml⁻¹, respectively) into semen samples. In both groups, samples treated with 0.2 µg ml⁻¹ tadalafil had significant increase in sperm motility after 2 h incubation^[3].</p> <p>MCE has not independently confirmed the accuracy of these methods. They are for reference only.</p>
In Vivo	<p>The Tadalafil-treated group showed enhanced erectile function (intracavernosal pressure/mean arterial pressure) at 0.3, 0.5, 1, 3, and 5 Hz compared with diabetic group values at the respective frequencies that approached control values^[4].</p> <p>Oral administration of tadalafil (20 mg) or sildenafil (100 mg) was given. In both groups, computer-assisted semen analysis parameters showed no significant difference. After the administration of tadalafil (2 h) and sildenafil (1 h), there was no significant difference observed in premature acrosome reaction incidence rate^[3].</p> <p>MCE has not independently confirmed the accuracy of these methods. They are for reference only.</p>

REFERENCES

- [1]. Blount MA, et al. Binding of tritiated sildenafil, tadalafil, or vardenafil to the phosphodiesterase-5 catalytic site displays potency, specificity, heterogeneity, and cGMP stimulation. *Mol Pharmacol.* 2004 Jul;66(1):144-52.
- [2]. Yang Y, et al. Effect of acute tadalafil on sperm motility and acrosome reaction: in vitro and in vivo studies. *Andrologia.* 2013 Apr 14. [Epub ahead of print]
- [3]. Mostafa ME, et al. Effect of Chronic Low-dose Tadalafil on Penile Cavernous Tissues in Diabetic Rats. *Urology.* 2013 Jun;81(6):1253-60.

Caution: Product has not been fully validated for medical applications. For research use only.

Tel: 609-228-6898

Fax: 609-228-5909

E-mail: tech@MedChemExpress.com

Address: 1 Deer Park Dr, Suite Q, Monmouth Junction, NJ 08852, USA