



SZABO SCANDIC

Part of Europa Biosite

Produktinformation



Forschungsprodukte & Biochemikalien



Zellkultur & Verbrauchsmaterial



Diagnostik & molekulare Diagnostik



Laborgeräte & Service

Weitere Information auf den folgenden Seiten!
See the following pages for more information!



Lieferung & Zahlungsart

siehe unsere [Liefer- und Versandbedingungen](#)

Zuschläge

- Mindermengenzuschlag
- Trockeneiszuschlag
- Gefahrgutzuschlag
- Expressversand

SZABO-SCANDIC HandelsgmbH

Quellenstraße 110, A-1100 Wien

T. +43(0)1 489 3961-0

F. +43(0)1 489 3961-7

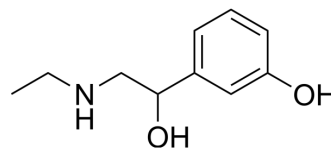
mail@szabo-scandic.com

www.szabo-scandic.com

[linkedin.com/company/szaboscandic](https://www.linkedin.com/company/szaboscandic) 

Etilefrine

Cat. No.:	HY-A0144		
CAS No.:	709-55-7		
Molecular Formula:	C ₁₀ H ₁₅ NO ₂		
Molecular Weight:	181.23		
Target:	Adrenergic Receptor; AMPK		
Pathway:	GPCR/G Protein; Neuronal Signaling; Epigenetics; PI3K/Akt/mTOR		
Storage:	Powder	-20°C	3 years
		4°C	2 years
	In solvent	-80°C	6 months
		-20°C	1 month



SOLVENT & SOLUBILITY

In Vitro	DMSO : 40 mg/mL (220.71 mM; Need ultrasonic)				
		Solvent Concentration	Mass 1 mg	5 mg	10 mg
	Preparing Stock Solutions	1 mM	5.5179 mL	27.5893 mL	55.1785 mL
		5 mM	1.1036 mL	5.5179 mL	11.0357 mL
10 mM		0.5518 mL	2.7589 mL	5.5179 mL	
Please refer to the solubility information to select the appropriate solvent.					
In Vivo	1. Add each solvent one by one: 10% DMSO >> 40% PEG300 >> 5% Tween-80 >> 45% saline Solubility: ≥ 4 mg/mL (22.07 mM); Clear solution 2. Add each solvent one by one: 10% DMSO >> 90% (20% SBE-β-CD in saline) Solubility: ≥ 4 mg/mL (22.07 mM); Clear solution				

BIOLOGICAL ACTIVITY

Description	Etilefrine (3-[2-(ethylamino)-1-hydroxyethyl]phenol) is an α adrenergic agonist ^[2] . Etilefrine also is an AMPK activator ^[1] . Etilefrine can be used for the research of postural hypotension ^[3] .
IC₅₀ & Target	AMPK
In Vivo	Etilefrine (0.1 mg/kg; i.v.) increases blood pressure (BP) and heart rate (HR), however, Etilefrine does not attenuate the decrease in BP induced by the tilt. Etilefrine also tends to increase cardiac output (CO) ^[3] . MCE has not independently confirmed the accuracy of these methods. They are for reference only.

REFERENCES

- [1]. Sylvain Tollis, et al. Chemical Interrogation of Nuclear Size Identifies Compounds with Cancer Cell Line-Specific Effects on Migration and Invasion. ACS Chem Biol. 2022 Feb 24.
- [2]. Chi Xu, et al. Accurate Drug Repositioning through Non-tissue-Specific Core Signatures from Cancer Transcriptomes. Cell Rep. 2018 Oct 9;25(2):523-535.e5.
- [3]. R Yamazaki, et al. Effects of dihydroergotamine and Etilefrine on experimentally-induced postural hypotension in dogs. J Pharmacobiodyn. 1990 Sep;13(9):519-24.
-

Caution: Product has not been fully validated for medical applications. For research use only.

Tel: 609-228-6898

Fax: 609-228-5909

E-mail: tech@MedChemExpress.com

Address: 1 Deer Park Dr, Suite Q, Monmouth Junction, NJ 08852, USA