



SZABO SCANDIC

Part of Europa Biosite

Produktinformation



Forschungsprodukte & Biochemikalien



Zellkultur & Verbrauchsmaterial



Diagnostik & molekulare Diagnostik



Laborgeräte & Service

Weitere Information auf den folgenden Seiten!
See the following pages for more information!



Lieferung & Zahlungsart

siehe unsere [Liefer- und Versandbedingungen](#)

Zuschläge

- Mindermengenzuschlag
- Trockeneiszuschlag
- Gefahrgutzuschlag
- Expressversand

SZABO-SCANDIC HandelsgmbH

Quellenstraße 110, A-1100 Wien

T. +43(0)1 489 3961-0

F. +43(0)1 489 3961-7

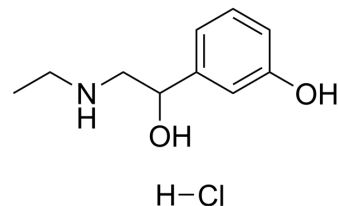
mail@szabo-scandic.com

www.szabo-scandic.com

[linkedin.com/company/szaboscandic](https://www.linkedin.com/company/szaboscandic) 

Etilefrine hydrochloride

Cat. No.:	HY-A0144A
CAS No.:	943-17-9
Molecular Formula:	C ₁₀ H ₁₆ ClNO ₂
Molecular Weight:	217.69
Target:	AMPK; Adrenergic Receptor
Pathway:	Epigenetics; PI3K/Akt/mTOR; GPCR/G Protein; Neuronal Signaling
Storage:	4°C, sealed storage, away from moisture * In solvent : -80°C, 6 months; -20°C, 1 month (sealed storage, away from moisture)



SOLVENT & SOLUBILITY

In Vitro	DMSO : 100 mg/mL (459.37 mM; Need ultrasonic)				
		Solvent	Mass		
	Preparing Stock Solutions	Concentration	1 mg	5 mg	10 mg
		1 mM	4.5937 mL	22.9684 mL	45.9369 mL
		5 mM	0.9187 mL	4.5937 mL	9.1874 mL
10 mM		0.4594 mL	2.2968 mL	4.5937 mL	
Please refer to the solubility information to select the appropriate solvent.					
In Vivo	1. Add each solvent one by one: 10% DMSO >> 40% PEG300 >> 5% Tween-80 >> 45% saline Solubility: ≥ 2.5 mg/mL (11.48 mM); Clear solution 2. Add each solvent one by one: 10% DMSO >> 90% (20% SBE-β-CD in saline) Solubility: ≥ 2.5 mg/mL (11.48 mM); Clear solution 3. Add each solvent one by one: 10% DMSO >> 90% corn oil Solubility: ≥ 2.5 mg/mL (11.48 mM); Clear solution				

BIOLOGICAL ACTIVITY

Description	Etilefrine hydrochloride is an orally active α adrenergic agonist. Etilefrine hydrochloride is also an AMPK activator. Etilefrine hydrochloride can be used for the research of postural hypotension ^{[1][2][3][4]} .
--------------------	--

REFERENCES

[1]. Sylvain Tollis, et al. Chemical Interrogation of Nuclear Size Identifies Compounds with Cancer Cell Line-Specific Effects on Migration and Invasion. ACS Chem Biol. 2022 Feb 24.

-
- [2]. Chi Xu, et al. Accurate Drug Repositioning through Non-tissue-Specific Core Signatures from Cancer Transcriptomes. *Cell Rep.* 2018 Oct 9;25(2):523-535.e5.
- [3]. R Yamazaki, et al. Effects of dihydroergotamine and Etilefrine on experimentally-induced postural hypotension in dogs. *J Pharmacobiodyn.* 1990 Sep;13(9):519-24.
- [4]. Bouaggad A, et al. The effect of oral etilefrine premedication on the incidence of hypotension during spinal anaesthesia. *Eur J Anaesthesiol.* 2000 Mar;17(3):177-81.
-

Caution: Product has not been fully validated for medical applications. For research use only.

Tel: 609-228-6898

Fax: 609-228-5909

E-mail: tech@MedChemExpress.com

Address: 1 Deer Park Dr, Suite Q, Monmouth Junction, NJ 08852, USA