



# SZABO SCANDIC

Part of Europa Biosite

## Produktinformation



Forschungsprodukte & Biochemikalien



Zellkultur & Verbrauchsmaterial



Diagnostik & molekulare Diagnostik



Laborgeräte & Service

Weitere Information auf den folgenden Seiten!  
See the following pages for more information!



### Lieferung & Zahlungsart

siehe unsere [Liefer- und Versandbedingungen](#)

### Zuschläge

- Mindermengenzuschlag
- Trockeneiszuschlag
- Gefahrgutzuschlag
- Expressversand

### SZABO-SCANDIC HandelsgmbH

Quellenstraße 110, A-1100 Wien

T. +43(0)1 489 3961-0

F. +43(0)1 489 3961-7

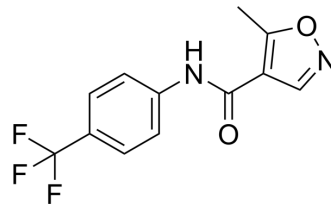
[mail@szabo-scandic.com](mailto:mail@szabo-scandic.com)

[www.szabo-scandic.com](http://www.szabo-scandic.com)

[linkedin.com/company/szaboscandic](https://www.linkedin.com/company/szaboscandic) 

## Leflunomide (Standard)

Cat. No.:	HY-B0083R
CAS No.:	75706-12-6
Molecular Formula:	C <sub>12</sub> H <sub>9</sub> F <sub>3</sub> N <sub>2</sub> O <sub>2</sub>
Molecular Weight:	270.21
Target:	Endogenous Metabolite; Bacterial; Dihydroorotate Dehydrogenase
Pathway:	Metabolic Enzyme/Protease; Anti-infection
Storage:	Please store the product under the recommended conditions in the Certificate of Analysis.



### BIOLOGICAL ACTIVITY

#### Description

Leflunomide (Standard) is the analytical standard of Leflunomide. This product is intended for research and analytical applications. Leflunomide is a pyrimidine synthesis inhibitor, inhibiting dihydroorotate dehydrogenase (DHODH), and acts as a disease-modifying antirheumatic agent.

### REFERENCES

- [1]. Davis JP, et al. The immunosuppressive metabolite of leflunomide is a potent inhibitor of human dihydroorotate dehydrogenase. *Biochemistry*. 1996 Jan 30;35(4):1270-3.
- [2]. Xu X, et al. Inhibition of protein tyrosine phosphorylation in T cells by a novel immunosuppressive agent, leflunomide. *J Biol Chem*. 1995 May 26;270(21):12398-403.
- [3]. Fox RI, et al. Mechanism of action for leflunomide in rheumatoid arthritis. *Clin Immunol*. 1999 Dec;93(3):198-208.

**Caution: Product has not been fully validated for medical applications. For research use only.**

Tel: 609-228-6898

Fax: 609-228-5909

E-mail: [tech@MedChemExpress.com](mailto:tech@MedChemExpress.com)

Address: 1 Deer Park Dr, Suite Q, Monmouth Junction, NJ 08852, USA