



# SZABO SCANDIC

Part of Europa Biosite

## Produktinformation



Forschungsprodukte & Biochemikalien



Zellkultur & Verbrauchsmaterial



Diagnostik & molekulare Diagnostik



Laborgeräte & Service

Weitere Information auf den folgenden Seiten!  
See the following pages for more information!



### Lieferung & Zahlungsart

siehe unsere [Liefer- und Versandbedingungen](#)

### Zuschläge

- Mindermengenzuschlag
- Trockeneiszuschlag
- Gefahrgutzuschlag
- Expressversand

### SZABO-SCANDIC HandelsgmbH

Quellenstraße 110, A-1100 Wien

T. +43(0)1 489 3961-0

F. +43(0)1 489 3961-7

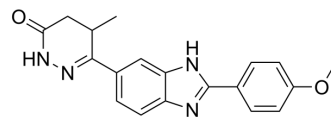
[mail@szabo-scandic.com](mailto:mail@szabo-scandic.com)

[www.szabo-scandic.com](http://www.szabo-scandic.com)

[linkedin.com/company/szaboscandic](https://www.linkedin.com/company/szaboscandic) 

## Pimobendan (Standard)

Cat. No.:	HY-B0204R
CAS No.:	74150-27-9
Molecular Formula:	C <sub>19</sub> H <sub>18</sub> N <sub>4</sub> O <sub>2</sub>
Molecular Weight:	334.37
Target:	Phosphodiesterase (PDE)
Pathway:	Metabolic Enzyme/Protease
Storage:	Please store the product under the recommended conditions in the Certificate of Analysis.



### BIOLOGICAL ACTIVITY

Description	Pimobendan (Standard) is the analytical standard of Pimobendan. This product is intended for research and analytical applications. Pimobendan (UD-CG115) is a selective inhibitor of PDE3 with IC <sub>50</sub> of 0.32 μM.
IC <sub>50</sub> & Target	PDE3 <sup>[1]</sup> .

### REFERENCES

[1]. Kajimoto K, et al. Contribution of phosphodiesterase isozymes to the regulation of the L-type calcium current in human cardiac myocytes. *Br J Pharmacol.* 1997 Aug;121(8):1549-56.

[2]. Iwasaki A, et al. Pimobendan inhibits the production of proinflammatory cytokines and gene expression of inducible nitric oxide synthase in a murine model of viral myocarditis. *J Am Coll Cardiol.* 1999 Apr;33(5):1400-7.

**Caution: Product has not been fully validated for medical applications. For research use only.**

Tel: 609-228-6898

Fax: 609-228-5909

E-mail: [tech@MedChemExpress.com](mailto:tech@MedChemExpress.com)

Address: 1 Deer Park Dr, Suite Q, Monmouth Junction, NJ 08852, USA