



# SZABO SCANDIC

Part of Europa Biosite

## Produktinformation



Forschungsprodukte & Biochemikalien



Zellkultur & Verbrauchsmaterial



Diagnostik & molekulare Diagnostik



Laborgeräte & Service

Weitere Information auf den folgenden Seiten!  
See the following pages for more information!



### Lieferung & Zahlungsart

siehe unsere [Liefer- und Versandbedingungen](#)

### Zuschläge

- Mindermengenzuschlag
- Trockeneiszuschlag
- Gefahrgutzuschlag
- Expressversand

### SZABO-SCANDIC HandelsgmbH

Quellenstraße 110, A-1100 Wien

T. +43(0)1 489 3961-0

F. +43(0)1 489 3961-7

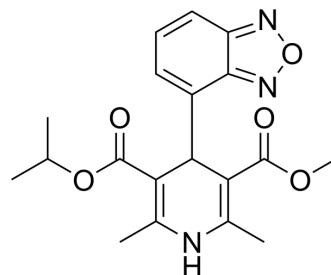
[mail@szabo-scandic.com](mailto:mail@szabo-scandic.com)

[www.szabo-scandic.com](http://www.szabo-scandic.com)

[linkedin.com/company/szaboscandic](https://www.linkedin.com/company/szaboscandic) 

## Isradipine (Standard)

<b>Cat. No.:</b>	HY-B0233R
<b>CAS No.:</b>	75695-93-1
<b>Molecular Formula:</b>	C <sub>19</sub> H <sub>21</sub> N <sub>3</sub> O <sub>5</sub>
<b>Molecular Weight:</b>	371.39
<b>Target:</b>	Autophagy; Calcium Channel
<b>Pathway:</b>	Autophagy; Membrane Transporter/Ion Channel; Neuronal Signaling
<b>Storage:</b>	Please store the product under the recommended conditions in the Certificate of Analysis.



### BIOLOGICAL ACTIVITY

<b>Description</b>	Isradipine (Standard) is the analytical standard of Isradipine. This product is intended for research and analytical applications. Isradipine (PN 200-110) is an orally active L-type calcium channel blocker. Isradipine, as a powerful peripheral vasodilator, is a dihydropyridine calcium antagonist with selective actions on the heart as well as the peripheral circulation. Isradipine is a potentially viable neuroprotective agent for Parkinson's disease <sup>[1][2][3]</sup> .
<b>IC<sub>50</sub> &amp; Target</b>	L-type calcium channel <sup>[1][2]</sup>

### REFERENCES

- [1]. Ilijic E, et al. The L-type channel antagonist isradipine is neuroprotective in a mouse model of Parkinson's disease. *Neurobiol Dis.* 2011;43(2):364-371.
- [2]. Campbell CA, et al. Effects of isradipine, an L-type calcium channel blocker on permanent and transient focal cerebral ischemia in spontaneously hypertensive rats. *Exp Neurol.* 1997;148(1):45-50.
- [3]. Hof RP, et al. Selective effects of PN 200-110 (isradipine) on the peripheral circulation and the heart. *Am J Cardiol.* 1987;59(3):30B-36B.

**Caution: Product has not been fully validated for medical applications. For research use only.**

Tel: 609-228-6898

Fax: 609-228-5909

E-mail: tech@MedChemExpress.com

Address: 1 Deer Park Dr, Suite Q, Monmouth Junction, NJ 08852, USA