



SZABO SCANDIC

Part of Europa Biosite

Produktinformation



Forschungsprodukte & Biochemikalien



Zellkultur & Verbrauchsmaterial



Diagnostik & molekulare Diagnostik



Laborgeräte & Service

Weitere Information auf den folgenden Seiten!
See the following pages for more information!



Lieferung & Zahlungsart

siehe unsere [Liefer- und Versandbedingungen](#)

Zuschläge

- Mindermengenzuschlag
- Trockeneiszuschlag
- Gefahrgutzuschlag
- Expressversand

SZABO-SCANDIC HandelsgmbH

Quellenstraße 110, A-1100 Wien

T. +43(0)1 489 3961-0

F. +43(0)1 489 3961-7

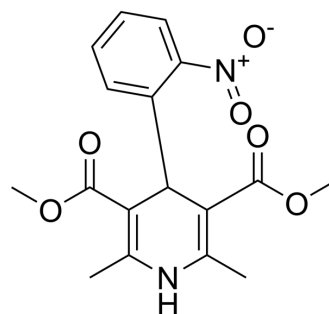
mail@szabo-scandic.com

www.szabo-scandic.com

[linkedin.com/company/szaboscandic](https://www.linkedin.com/company/szaboscandic) 

Nifedipine (Standard)

Cat. No.:	HY-B0284R
CAS No.:	21829-25-4
Molecular Formula:	C ₁₇ H ₁₈ N ₂ O ₆
Molecular Weight:	346.33
Target:	Calcium Channel; Autophagy
Pathway:	Membrane Transporter/Ion Channel; Neuronal Signaling; Autophagy
Storage:	Please store the product under the recommended conditions in the Certificate of Analysis.



SOLVENT & SOLUBILITY

In Vitro

DMSO : 100 mg/mL (288.74 mM; Need ultrasonic)
 H₂O : < 0.1 mg/mL (ultrasonic;warming;heat to 80°C) (insoluble)

Preparing Stock Solutions	Solvent Concentration	Mass	1 mg	5 mg	10 mg
		Concentration	1 mg	5 mg	10 mg
	1 mM		2.8874 mL	14.4371 mL	28.8742 mL
	5 mM		0.5775 mL	2.8874 mL	5.7748 mL
	10 mM		0.2887 mL	1.4437 mL	2.8874 mL

Please refer to the solubility information to select the appropriate solvent.

BIOLOGICAL ACTIVITY

Description

Nifedipine (Standard) is the analytical standard of Nifedipine. This product is intended for research and analytical applications. Nifedipine (BAY-a-1040) is a potent calcium channel blocker and agent of choice for cardiac insufficiencies.

REFERENCES

- [1]. Ratre MS, et al. Effect of azithromycin on gingival overgrowth induced by cyclosporine A + nifedipine combination therapy: A morphometric analysis in rats. J Indian Soc Periodontol. 2016 Jul-Aug;20(4):396-401.
- [2]. Yu SS, et al. Nifedipine Increases Iron Content in WKPT-0293 Cl.2 Cells via Up-Regulating Iron Influx Proteins. Front Pharmacol. 2017 Feb 13;8:60
- [3]. Carvajal JA, et al. The Synergic In Vitro Tocolytic Effect of Nifedipine Plus Ritodrine on Human Myometrial Contractility. Reprod Sci. 2017 Apr;24(4):635-640.
- [4]. Liu P, et al. The L-type Ca(2+) Channel Blocker Nifedipine Inhibits Mycelial Growth, Sporulation, and Virulence of Phytophthora capsici. Front Microbiol. 2016 Aug 4;7:1236.

Caution: Product has not been fully validated for medical applications. For research use only.

Tel: 609-228-6898

Fax: 609-228-5909

E-mail: tech@MedChemExpress.com

Address: 1 Deer Park Dr, Suite Q, Monmouth Junction, NJ 08852, USA