



# SZABO SCANDIC

Part of Europa Biosite

## Produktinformation



Forschungsprodukte & Biochemikalien



Zellkultur & Verbrauchsmaterial



Diagnostik & molekulare Diagnostik



Laborgeräte & Service

Weitere Information auf den folgenden Seiten!  
See the following pages for more information!



### Lieferung & Zahlungsart

siehe unsere [Liefer- und Versandbedingungen](#)

### Zuschläge

- Mindermengenzuschlag
- Trockeneiszuschlag
- Gefahrgutzuschlag
- Expressversand

### SZABO-SCANDIC HandelsgmbH

Quellenstraße 110, A-1100 Wien

T. +43(0)1 489 3961-0

F. +43(0)1 489 3961-7

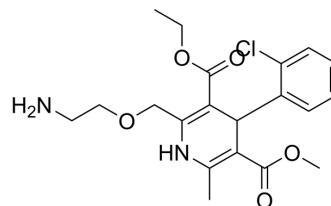
[mail@szabo-scandic.com](mailto:mail@szabo-scandic.com)

[www.szabo-scandic.com](http://www.szabo-scandic.com)

[linkedin.com/company/szaboscandic](https://www.linkedin.com/company/szaboscandic) 

## Amlodipine (Standard)

<b>Cat. No.:</b>	HY-B0317R
<b>CAS No.:</b>	88150-42-9
<b>Molecular Formula:</b>	C <sub>20</sub> H <sub>25</sub> ClN <sub>2</sub> O <sub>5</sub>
<b>Molecular Weight:</b>	408.88
<b>Target:</b>	Calcium Channel
<b>Pathway:</b>	Membrane Transporter/Ion Channel; Neuronal Signaling
<b>Storage:</b>	Please store the product under the recommended conditions in the Certificate of Analysis.



### BIOLOGICAL ACTIVITY

<b>Description</b>	Amlodipine (Standard) is the analytical standard of Amlodipine. This product is intended for research and analytical applications. Amlodipine, an antianginal agent and an orally active dihydropyridine calcium channel blocker, works by blocking the voltage-dependent L-type calcium channels, thereby inhibiting the initial influx of calcium. Amlodipine can be used for the research of high blood pressure and cancer <sup>[1][2][3]</sup> .
<b>IC<sub>50</sub> &amp; Target</b>	L-type calcium channel <sup>[1]</sup>

### REFERENCES

[1]. Kishen G. Bulsara, et al. Amlodipine.

[2]. Haria M, et al. Amlodipine. A reappraisal of its pharmacological properties and therapeutic use in cardiovascular disease [published correction appears in *Drugs* 1995 Nov;50(5):896]. *Drugs*. 1995;50(3):560-586.

[3]. Yoshida J, et, al. Antitumor effects of amlodipine, a Ca<sup>2+</sup> channel blocker, on human epidermoid carcinoma A431 cells in vitro and in vivo. *Eur J Pharmacol*. 2004 May 25;492(2-3):103-12.

[4]. Okuyama Y, et, al. The effects of anti-hypertensive drugs and the mechanism of hypertension in vascular smooth muscle cell-specific ATP2B1 knockout mice. *Hypertens Res*. 2018 Feb;41(2):80-87.

**Caution: Product has not been fully validated for medical applications. For research use only.**

Tel: 609-228-6898

Fax: 609-228-5909

E-mail: tech@MedChemExpress.com

Address: 1 Deer Park Dr, Suite Q, Monmouth Junction, NJ 08852, USA