



SZABO SCANDIC

Part of Europa Biosite

Produktinformation



Forschungsprodukte & Biochemikalien



Zellkultur & Verbrauchsmaterial



Diagnostik & molekulare Diagnostik



Laborgeräte & Service

Weitere Information auf den folgenden Seiten!
See the following pages for more information!



Lieferung & Zahlungsart

siehe unsere [Liefer- und Versandbedingungen](#)

Zuschläge

- Mindermengenzuschlag
- Trockeneiszuschlag
- Gefahrgutzuschlag
- Expressversand

SZABO-SCANDIC HandelsgmbH

Quellenstraße 110, A-1100 Wien

T. +43(0)1 489 3961-0

F. +43(0)1 489 3961-7

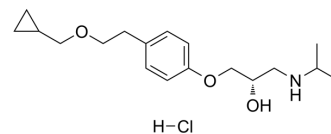
mail@szabo-scandic.com

www.szabo-scandic.com

[linkedin.com/company/szaboscandic](https://www.linkedin.com/company/szaboscandic) 

Levobetaxolol hydrochloride

Cat. No.:	HY-B0381B
CAS No.:	116209-55-3
Molecular Formula:	C ₁₈ H ₃₀ ClNO ₃
Molecular Weight:	343.89
Target:	Adrenergic Receptor
Pathway:	GPCR/G Protein; Neuronal Signaling
Storage:	4°C, sealed storage, away from moisture * In solvent : -80°C, 6 months; -20°C, 1 month (sealed storage, away from moisture)



SOLVENT & SOLUBILITY

In Vitro

DMSO : ≥ 100 mg/mL (290.79 mM)
 H₂O : 25 mg/mL (72.70 mM; Need ultrasonic)
 * "≥" means soluble, but saturation unknown.

Preparing Stock Solutions	Solvent Concentration	Mass	1 mg	5 mg	10 mg
	1 mM		2.9079 mL	14.5395 mL	29.0791 mL
	5 mM		0.5816 mL	2.9079 mL	5.8158 mL
	10 mM		0.2908 mL	1.4540 mL	2.9079 mL

Please refer to the solubility information to select the appropriate solvent.

In Vivo

- Add each solvent one by one: PBS
Solubility: 120 mg/mL (348.95 mM); Clear solution; Need ultrasonic
- Add each solvent one by one: 10% DMSO >> 40% PEG300 >> 5% Tween-80 >> 45% saline
Solubility: ≥ 2.5 mg/mL (7.27 mM); Clear solution
- Add each solvent one by one: 10% DMSO >> 90% (20% SBE-β-CD in saline)
Solubility: ≥ 2.5 mg/mL (7.27 mM); Clear solution

BIOLOGICAL ACTIVITY

Description

Levobetaxolol hydrochloride is a beta-adrenergic receptor inhibitor (beta blocker) that can lower the pressure in the eye. Levobetaxolol hydrochloride can be used for the research of glaucoma.

REFERENCES

[1]. Quaranta L, et al. Levobetaxolol hydrochloride: a review of its pharmacology and use in the treatment of chronic open-angle glaucoma and ocular hypertension. Clin Ophthalmol. 2007 Jun;1(2):93-97.

Caution: Product has not been fully validated for medical applications. For research use only.

Tel: 609-228-6898

Fax: 609-228-5909

E-mail: tech@MedChemExpress.com

Address: 1 Deer Park Dr, Suite Q, Monmouth Junction, NJ 08852, USA